

Changes in A&E attendance patterns since the covid19 lockdown

week 20 analysis

May 2020

Introduction

This document describes the changes that have taken place to patterns of attendances at accident and emergency departments since the covid19 lockdown on 23rd March 2020.

This analysis describes attendances at a representative subset of type 1 (24-hour consultant-led) A&E departments in England for the period up to the end of week 20 (16th May).

Key messages

Attendance rates at type 1 units are increasing but had not returned to pre-lockdown levels by the end of week 20.

In the week following the lockdown, rates fell to about half of their normal level; by week 20 attendances were 30% below the usual level.

Reductions in attendance rates preceded the lockdown by 1-2 weeks.

Attendance rates are down for all presentation types, acuity levels and age groups.

Injury presentations fell more sharply following the lockdown than illness presentations.

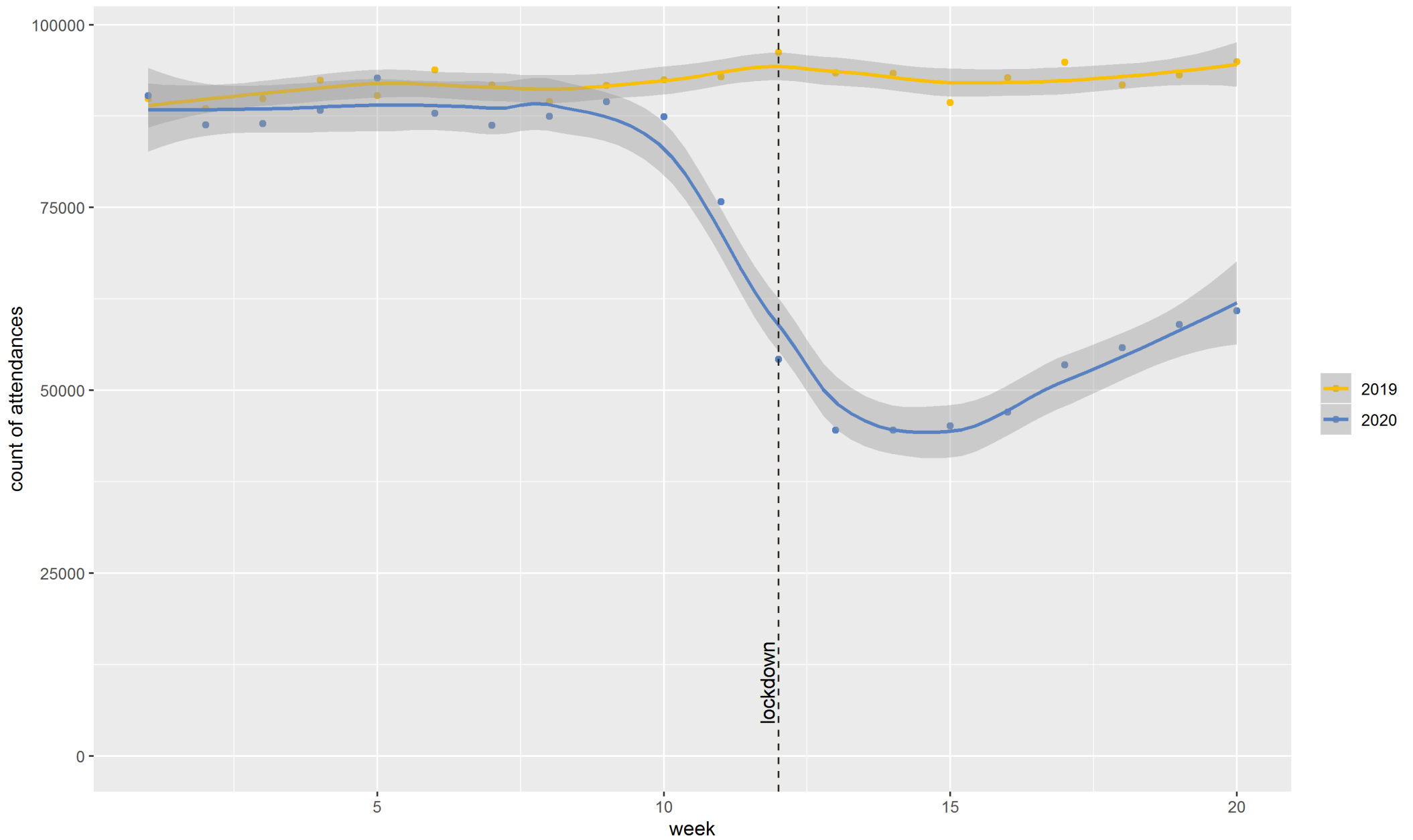
Injuries that are frequently associated with sporting activities fell at the fastest rates.

Illness presentations for children and those associated with obstetric, ENT and dermatological conditions fell most rapidly.

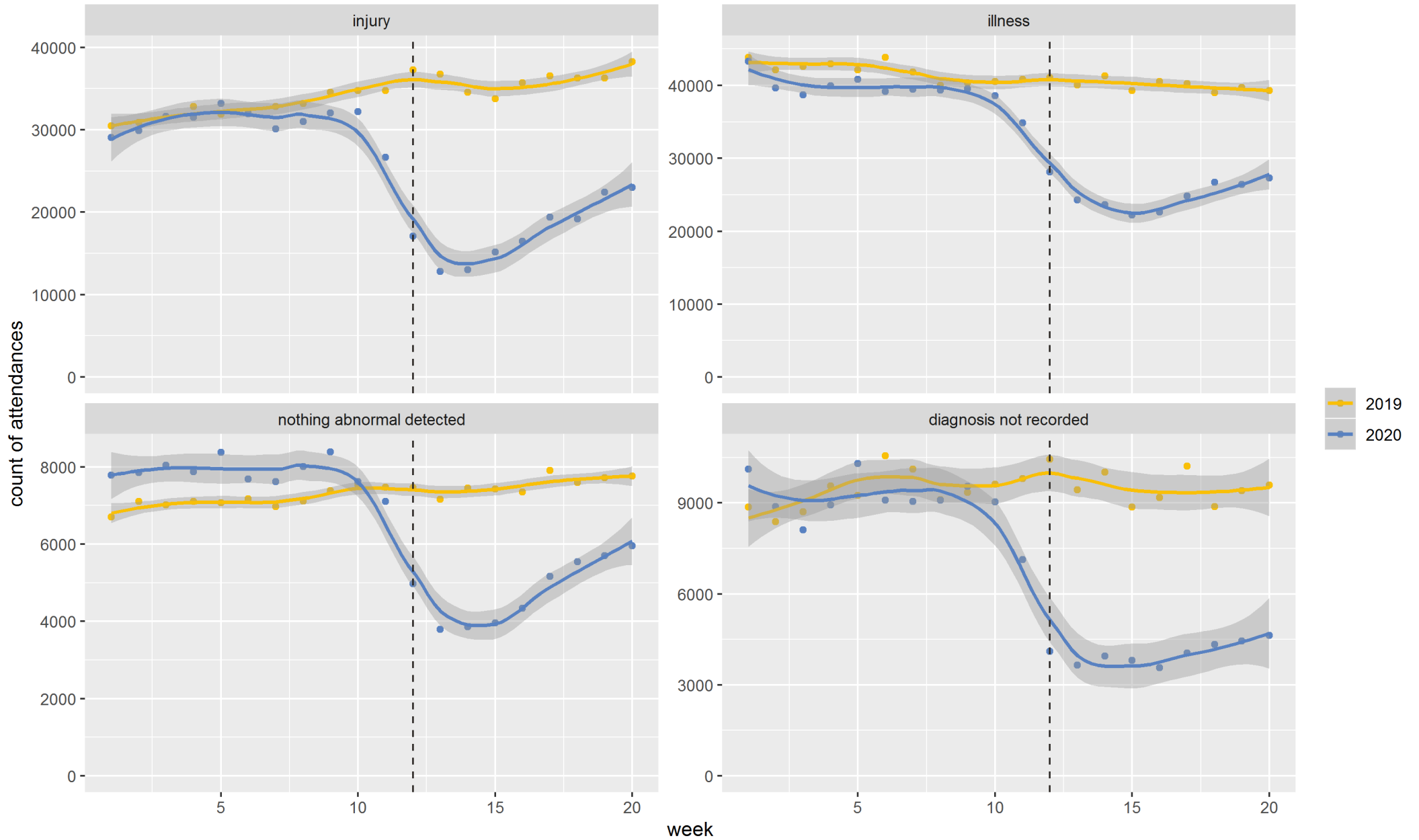
Whilst attendance rates for most conditions have begun to rise sharply in recent weeks, presentations for the most immediately life-threatening conditions and for infectious diseases, respiratory conditions and septicemia have not increased substantially since the start of the lockdown.

Attendances for Covid19 patients peaked in week 14 and had fallen to approx. one third of this rate by week 20.

Attendances at a subset of 24hr consultant-led emergency departments
Weeks 1-20 2019 & 2020 | England



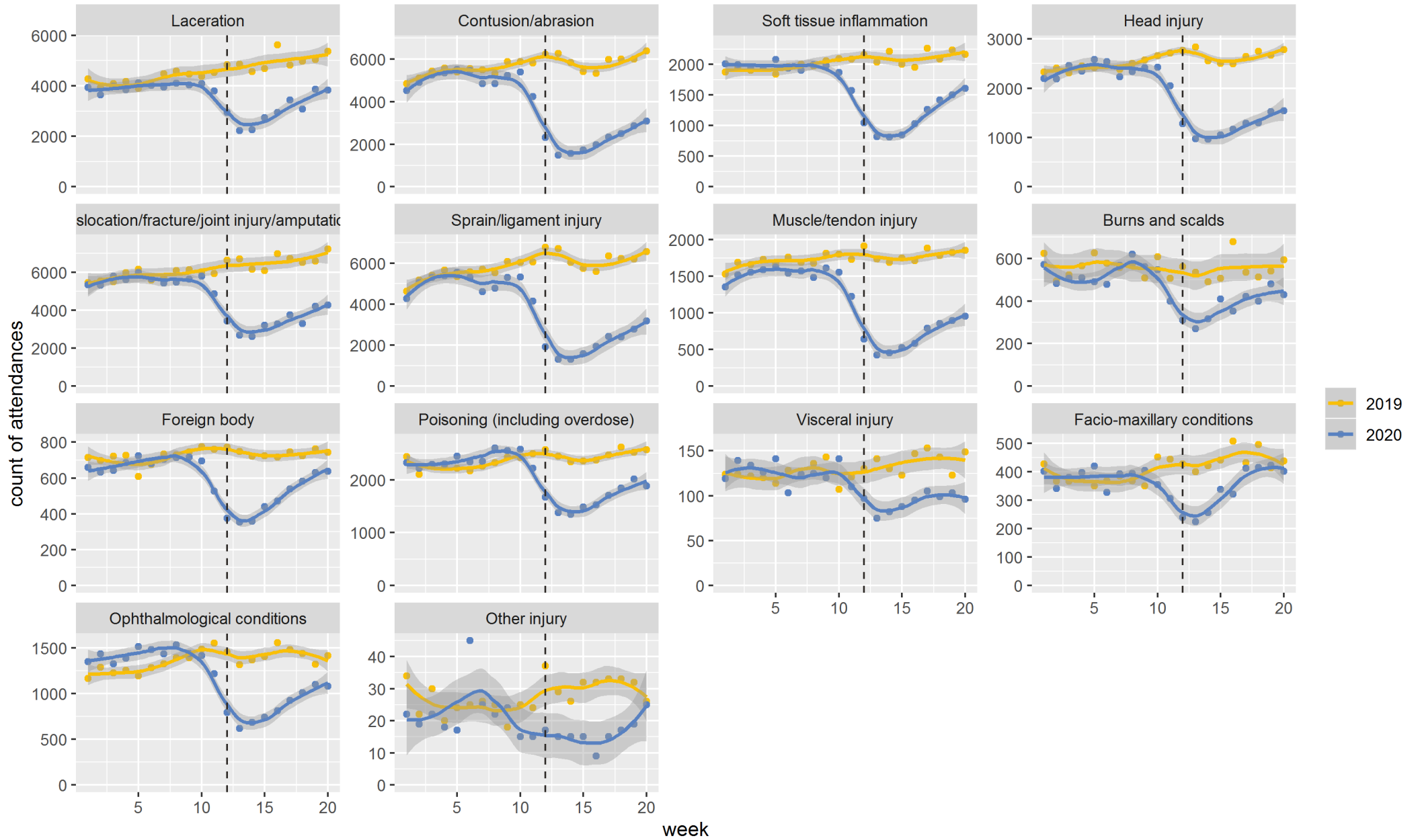
Attendances at a subset of 24hr consultant-led emergency departments by presentation type | Weeks 1-20 2019 & 2020 | England



Injury presentations

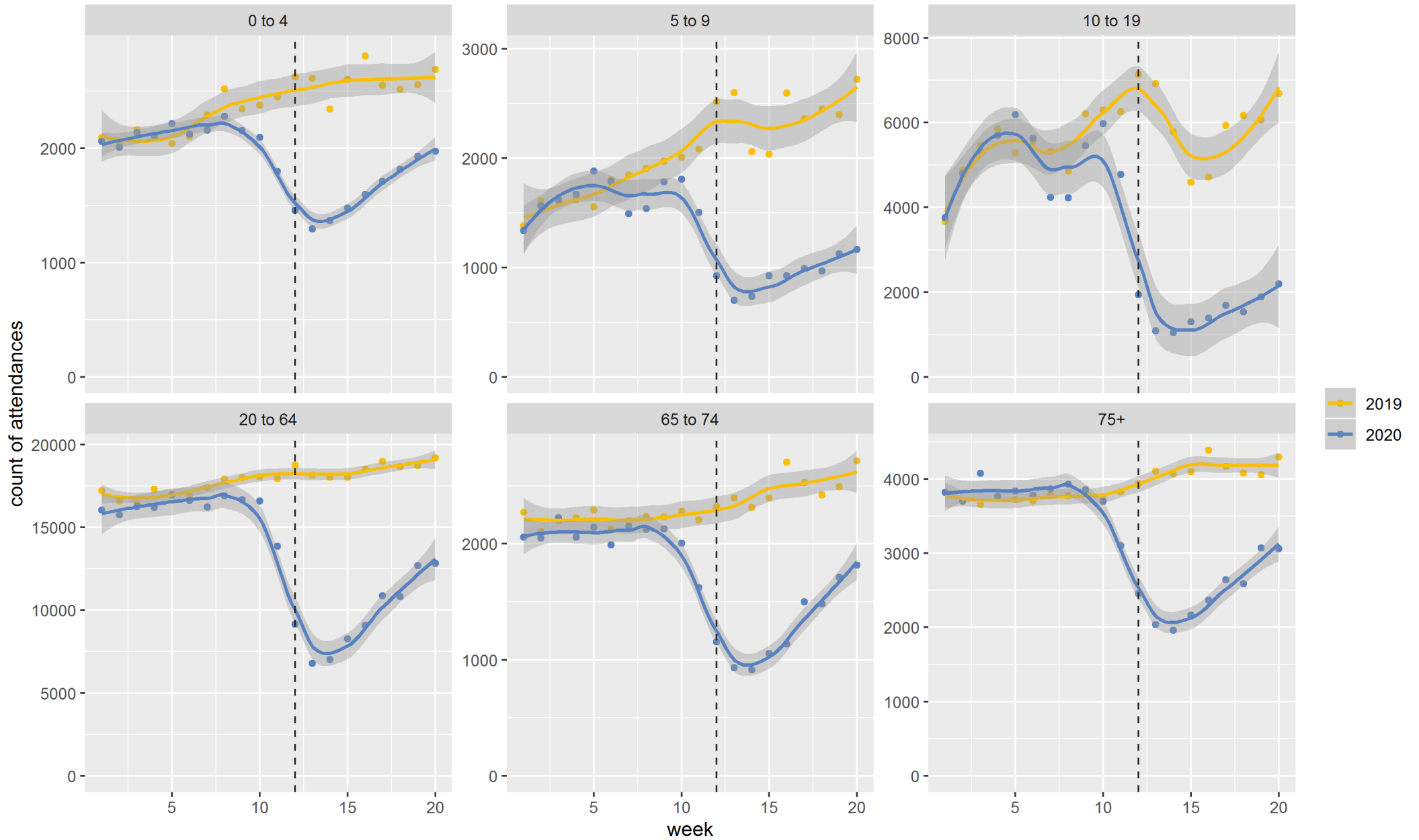
Attendances at a subset of 24hr consultant-led emergency departments

Injury presentations by diagnosis | Weeks 1-20 2019 & 2020 | England



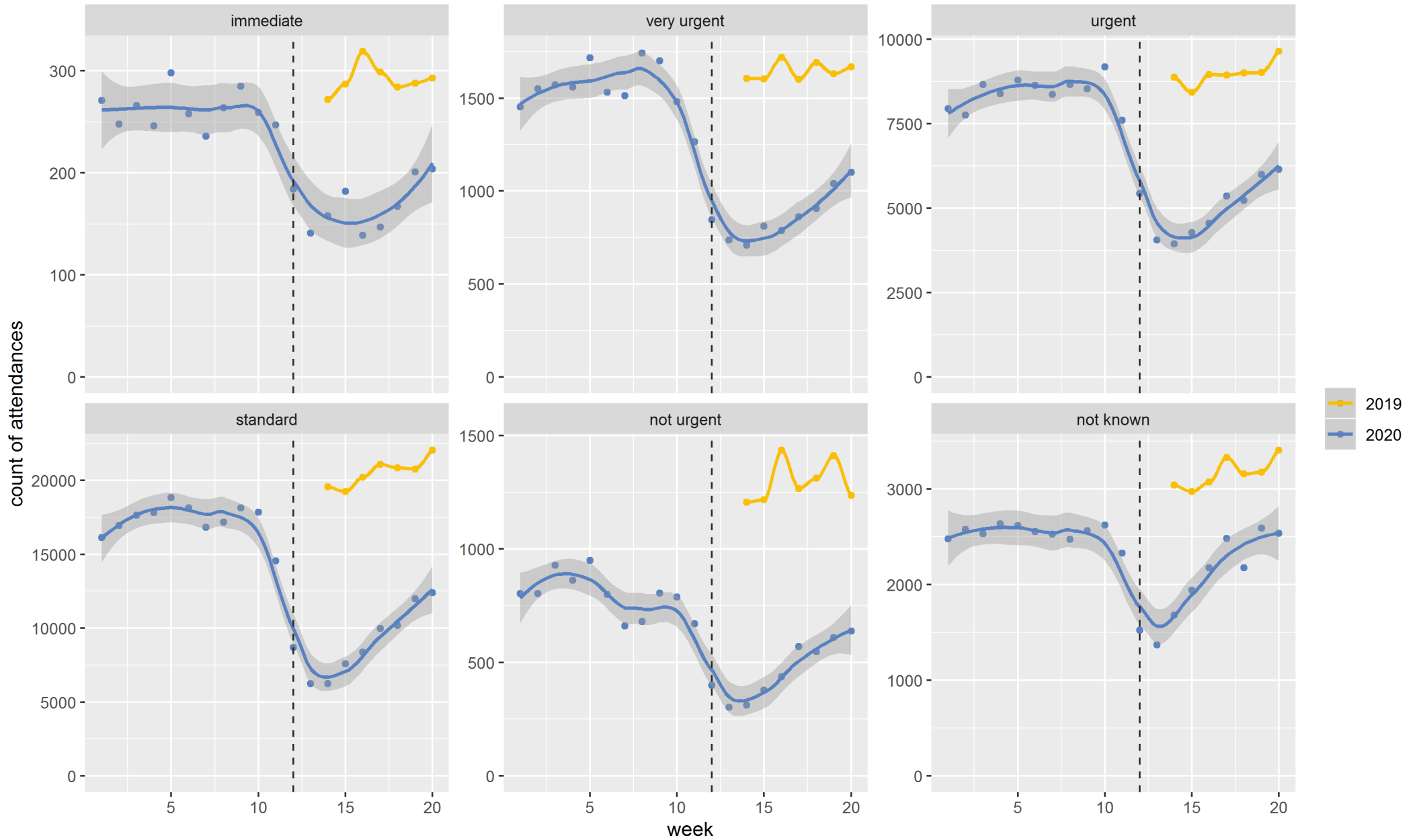
Attendances at a subset of 24hr consultant-led emergency departments

Injury presentations by age group | Weeks 1-20 2019 & 2020 | England



Attendances at a subset of 24hr consultant-led emergency departments

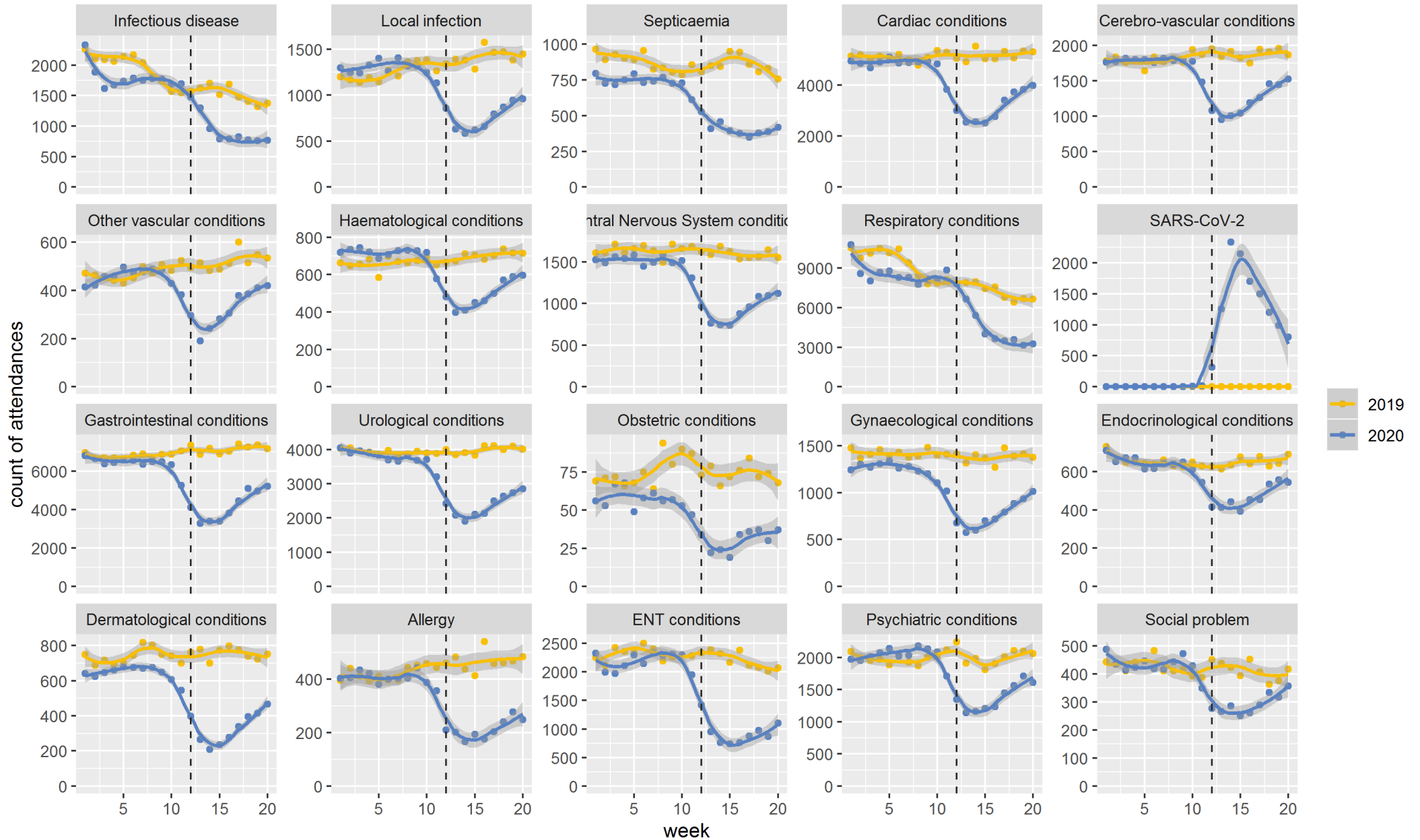
Injury presentations by acuity level | Weeks 1-20 2019 & 2020 | England



Illness presentations

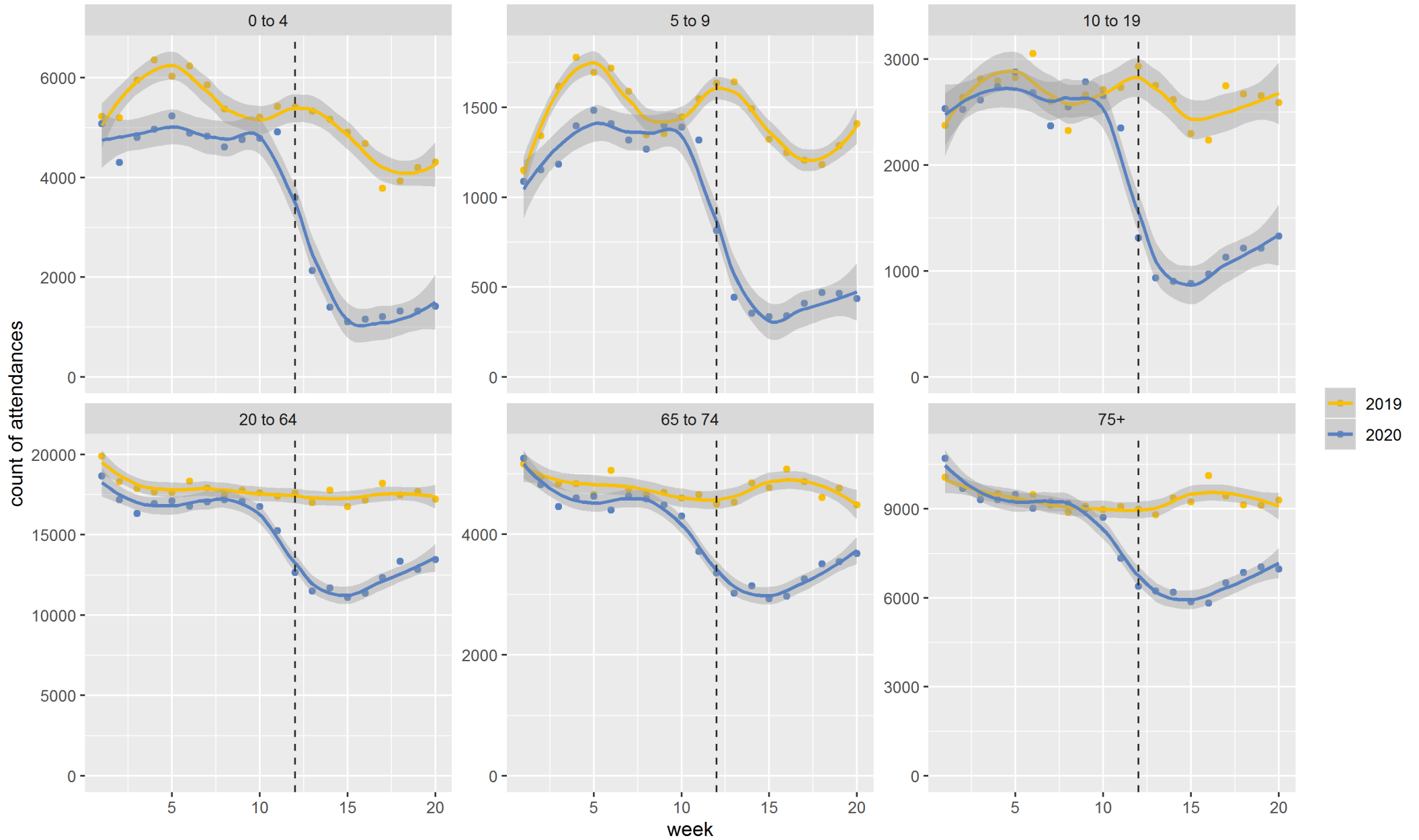
Attendances at a subset of 24hr consultant-led emergency departments

Illness presentations by diagnosis | Weeks 1-20 2019 & 2020 | England



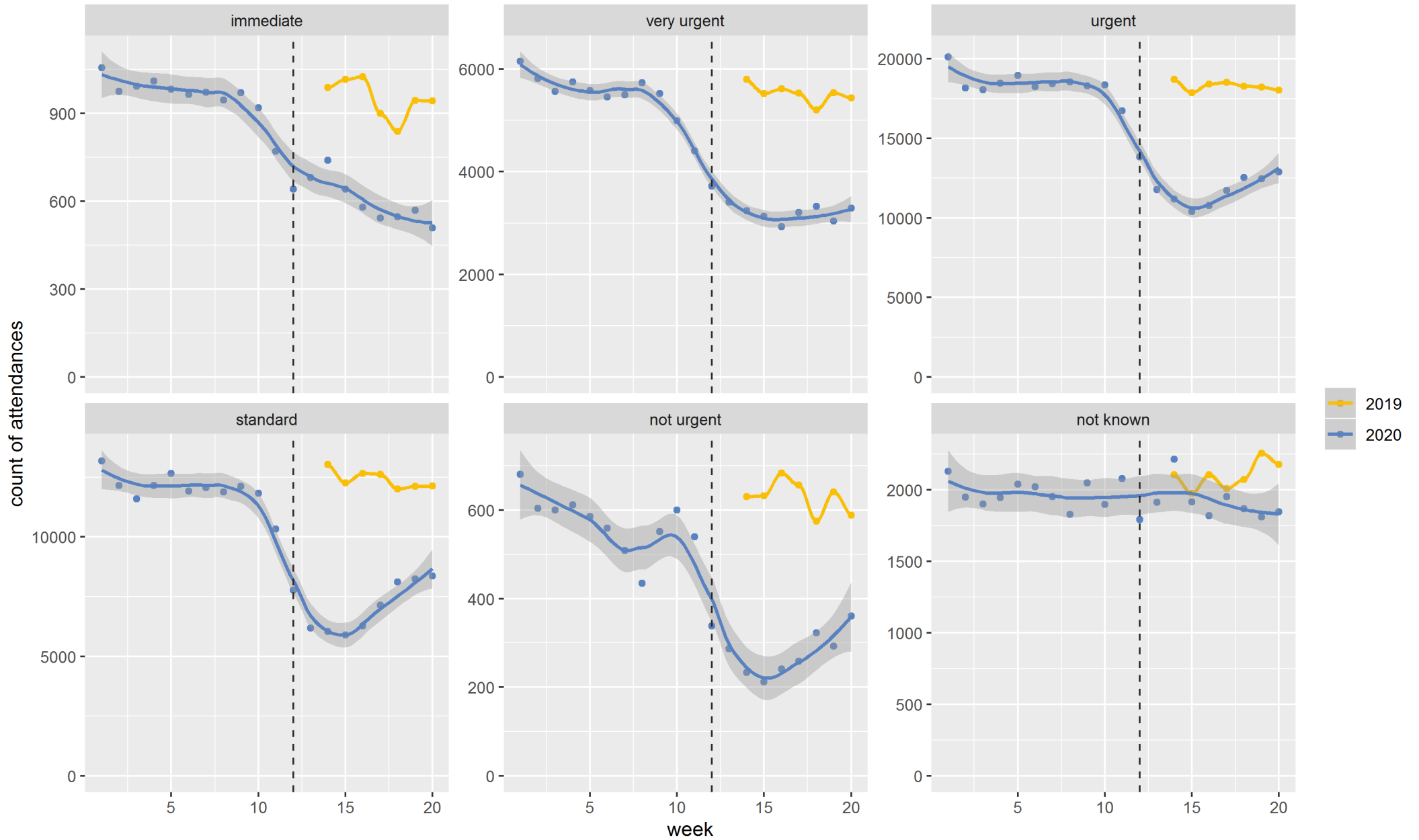
Attendances at a subset of 24hr consultant-led emergency departments

Illness presentations by age group | Weeks 1-20 2019 & 2020 | England



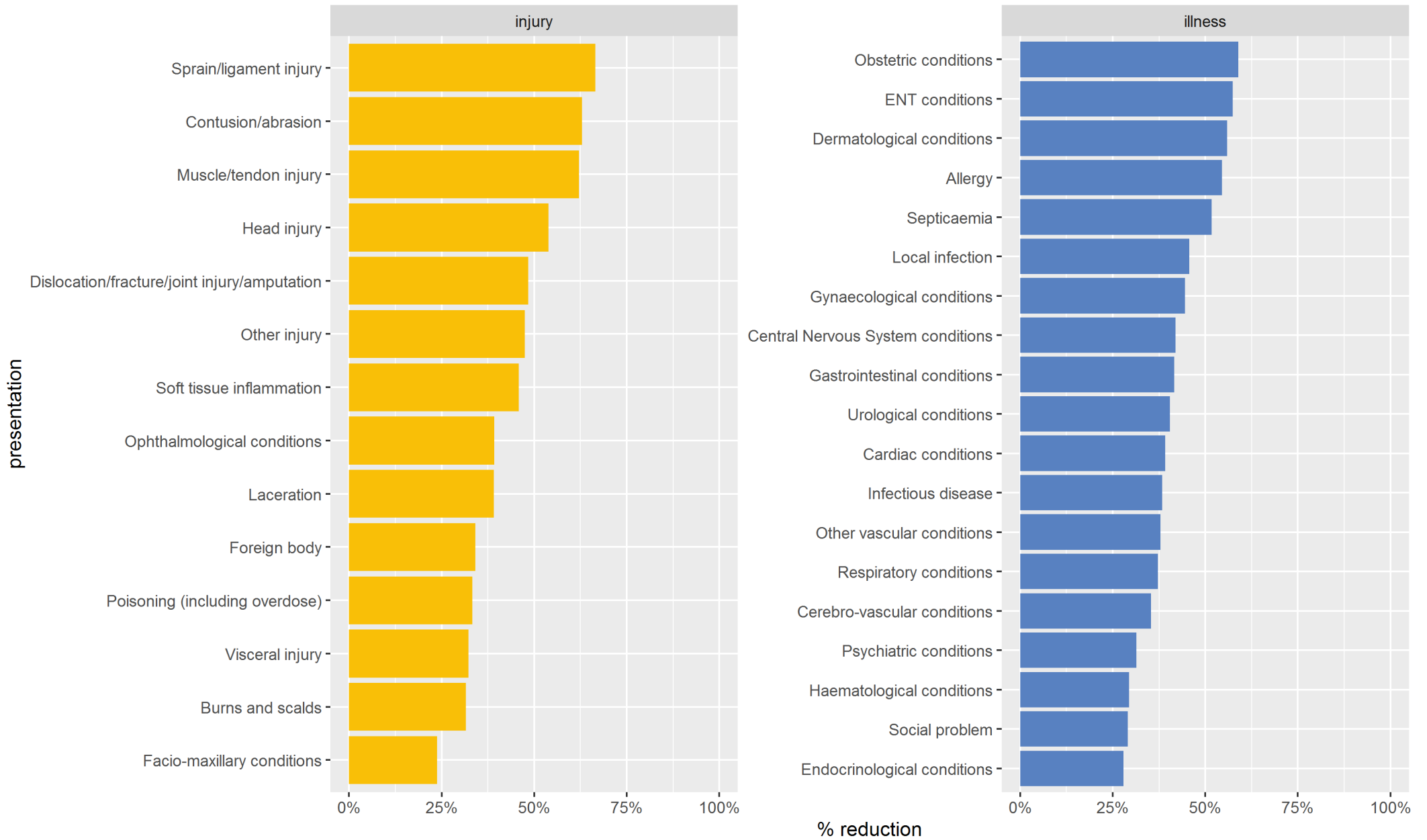
Attendances at a subset of 24hr consultant-led emergency departments

Illness presentations by acuity level | Weeks 1-20 2019 & 2020 | England

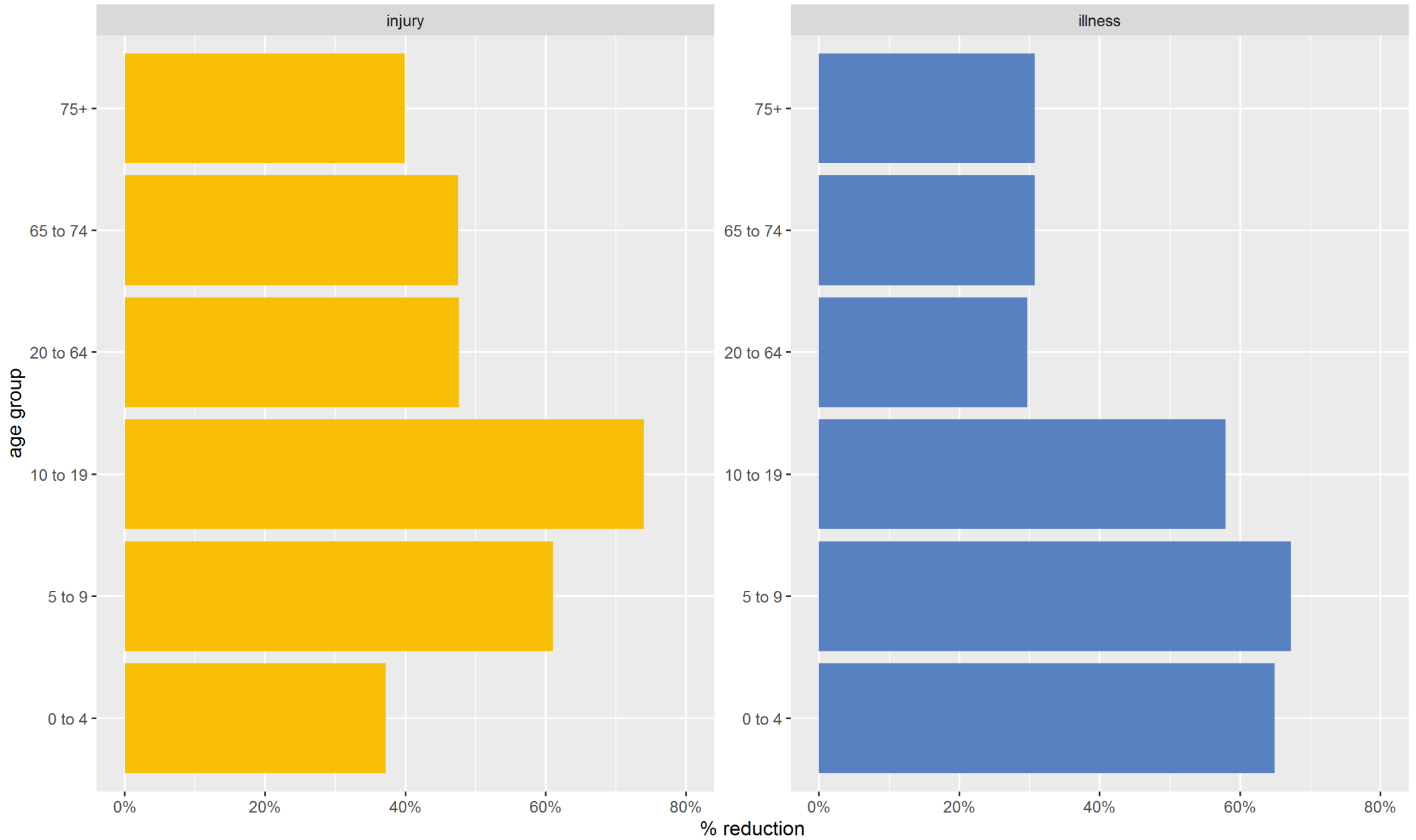


Relative changes

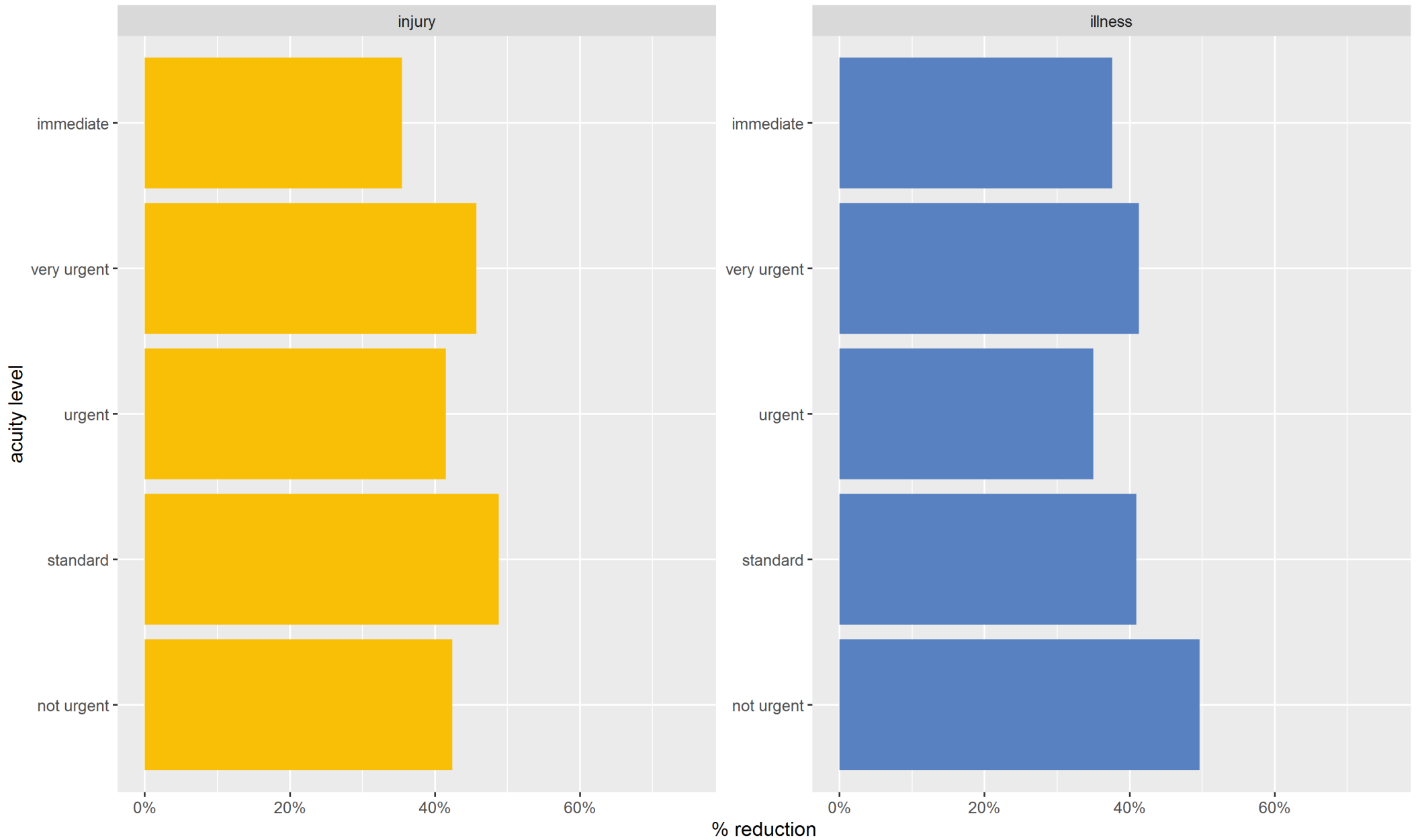
Change in attendances rates at a subset of 24hr consultant-led emergency departments by presentation type and diagnosis | Weeks 12-20 2019 & 2020 | England



Change in attendances rates at a subset of 24hr consultant-led emergency departments by presentation type and age group | Weeks 12-20 2019 & 2020 | England



Change in attendances rates at a subset of 24hr consultant-led emergency departments by presentation type and acuity level | Weeks 12-20 2020 vs weeks 2-10 2020 | England



**The
Strategy
Unit.**

Notes

The data

The data used in this analysis is drawn from the daily ECDS feeds from SUS, supplied by the National Commissioning Data Repository (NCDR).

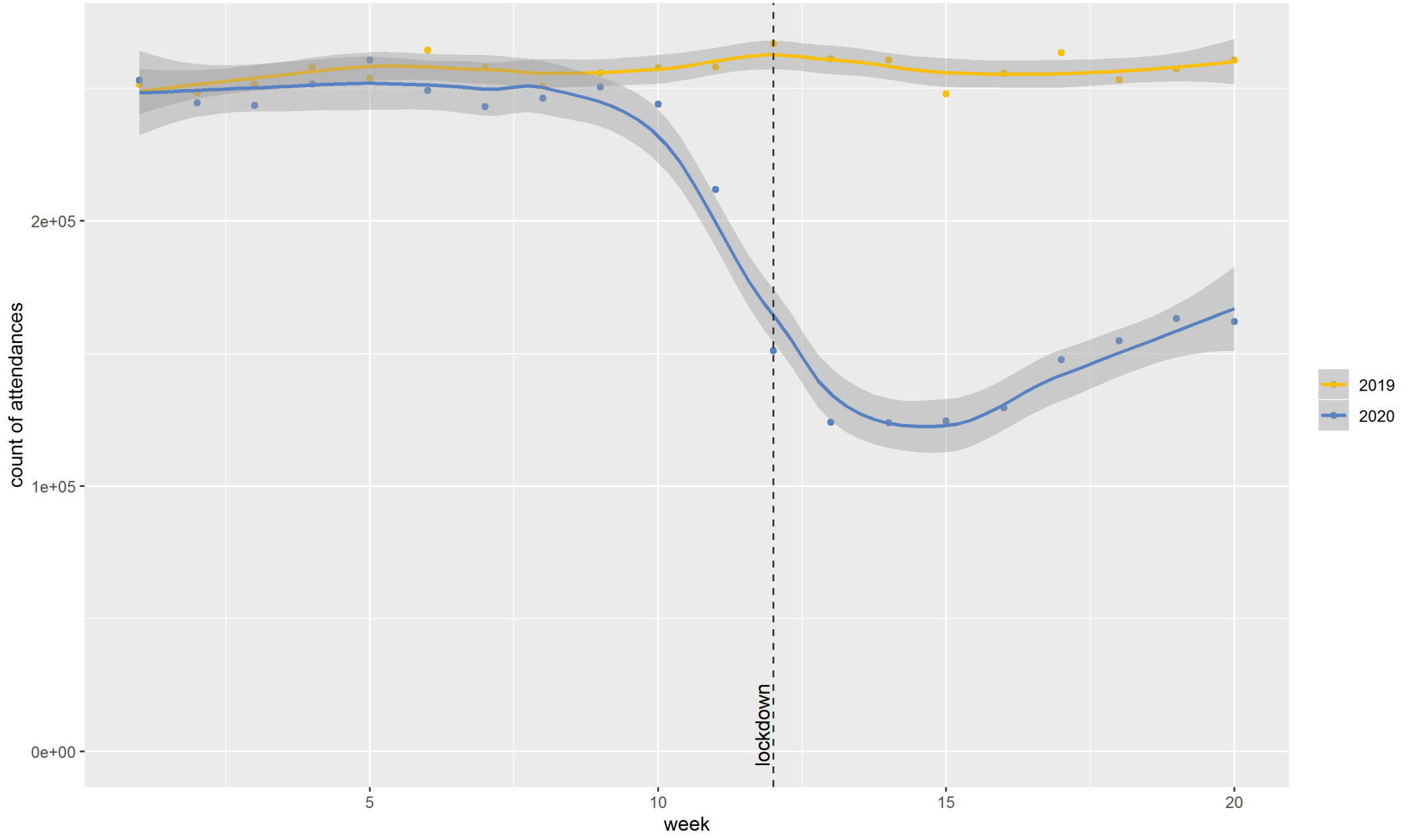
The charts show data for 39 trusts that have complete data for the period up to week 20 of 2020 and record patient diagnoses at consistently high levels.

The two additional charts below show;

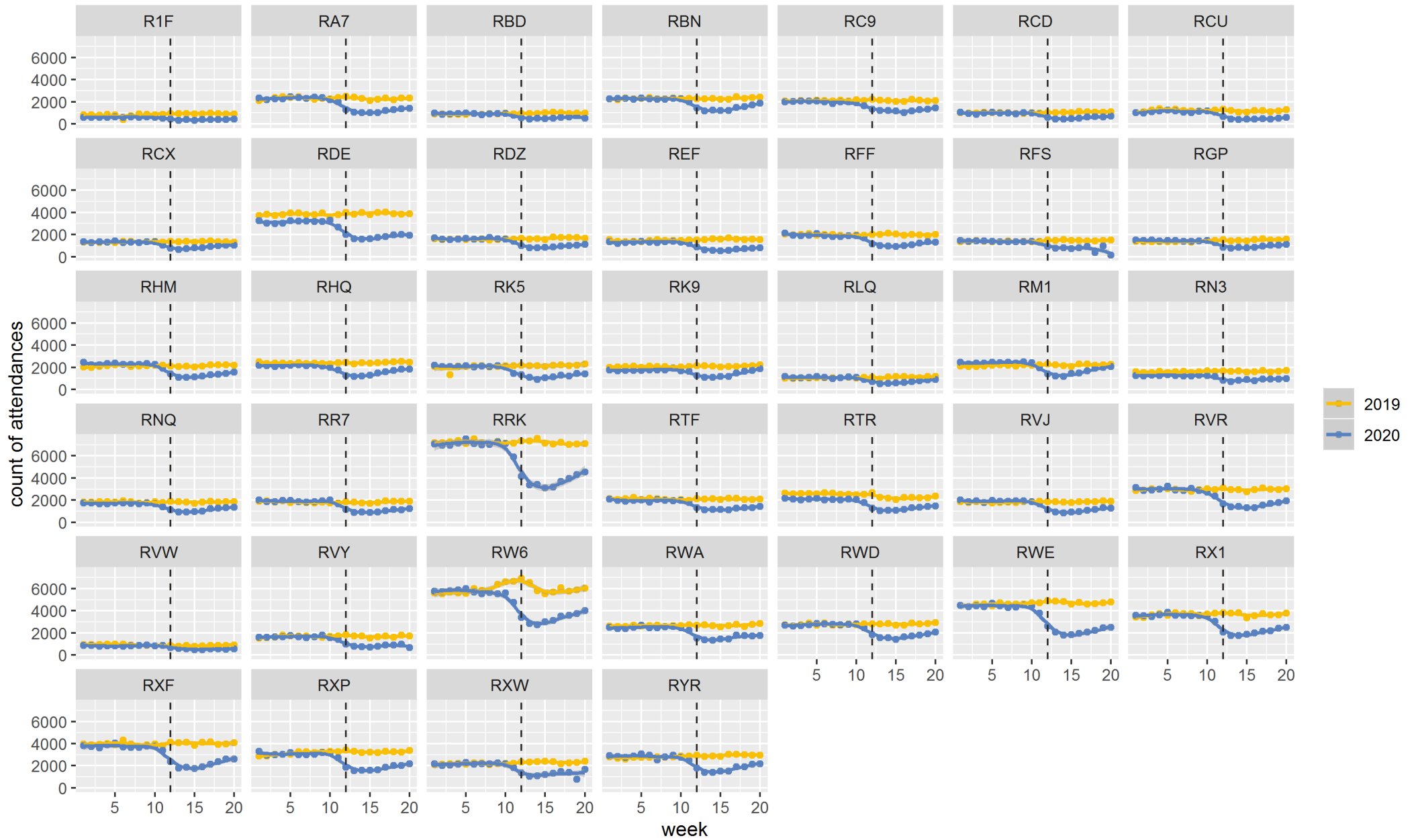
1) attendance rates for a fuller set of type 1 departments - this suggests that our sample of providers is not unusual in terms of the trends in attendances.

2) attendance rates by each of the 39 departments. Most providers show similar trends and there are no providers that appear to be disproportionately affecting the aggregate trends.

Attendances at a subset of 24hr consultant-led emergency departments
Weeks 1-20 2019 & 2020 | England



Attendances at a subset of 24hr consultant-led emergency departments Weeks 1-20 2019 & 2020 | England



For questions relating to this analysis, please contact:

Steven Wyatt
Head of Analytics, The Strategy Unit
swyatt@nhs.net

Leading research, analysis and change from within the NHS.

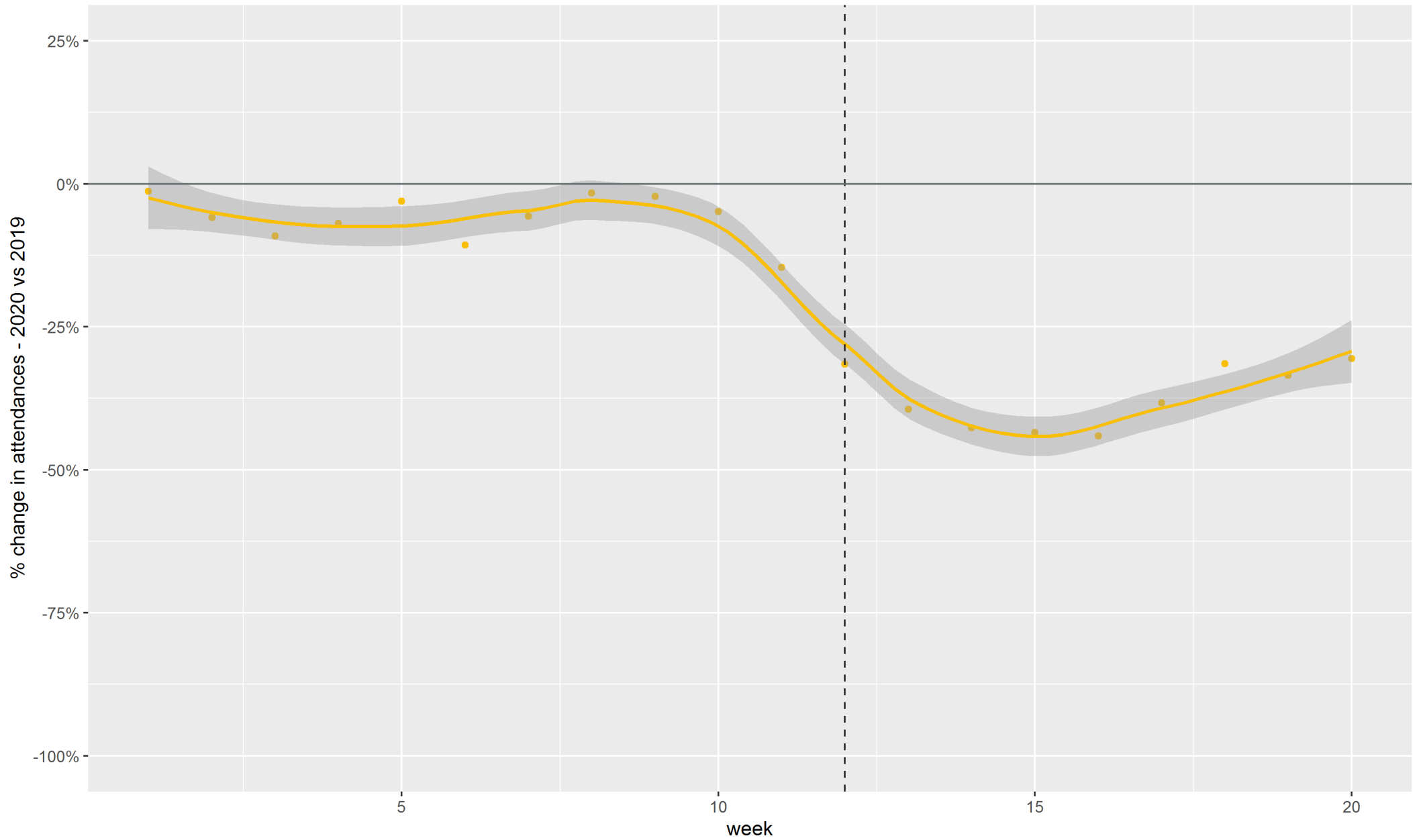
W: strategyunit.co.uk

Twitter: [@Strategy_Unit](https://twitter.com/Strategy_Unit)

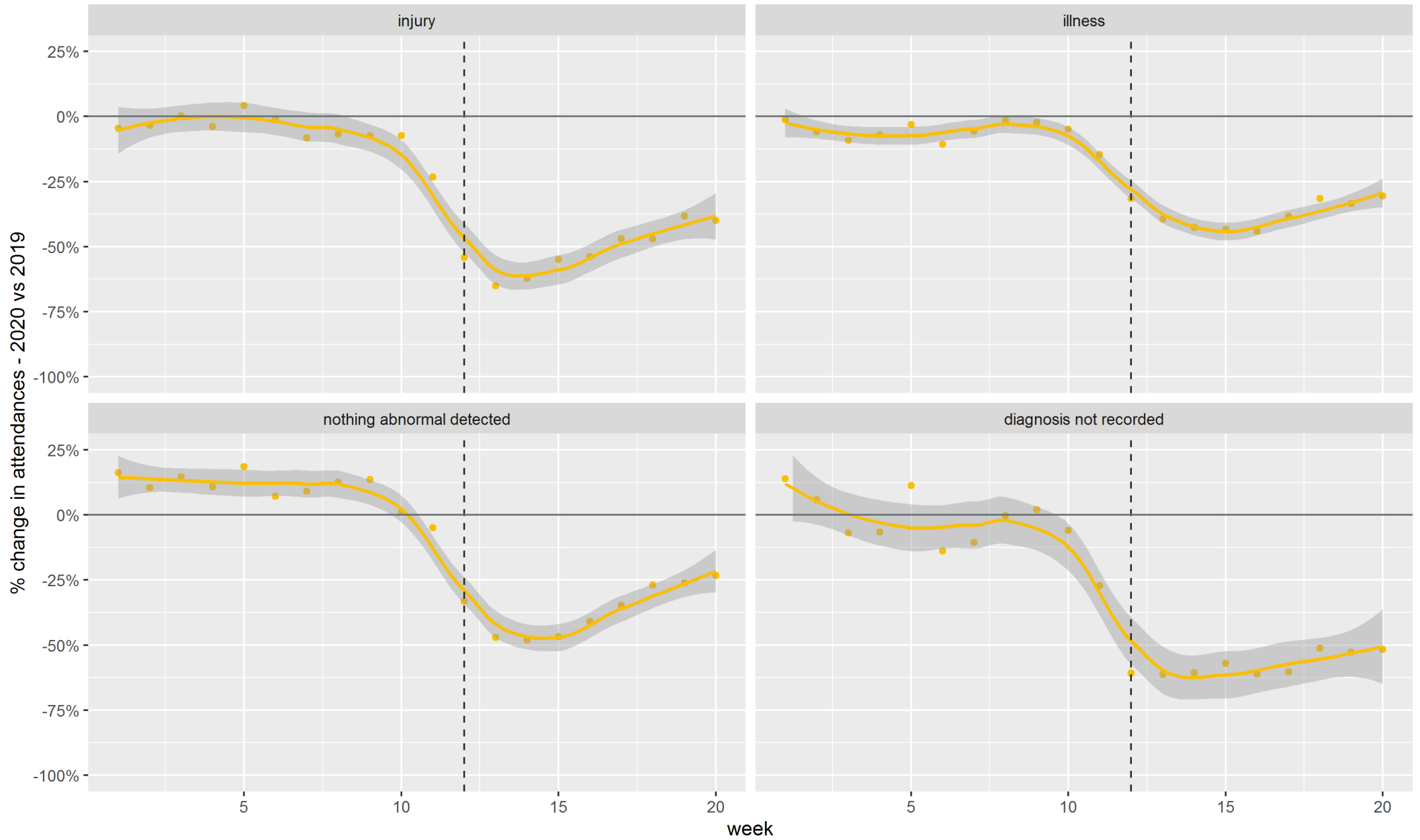
Additional charts

% change in attendances at a subset of 24hr consultant-led emergency departments

Weeks 1-20 | 2020 vs 2019 | England

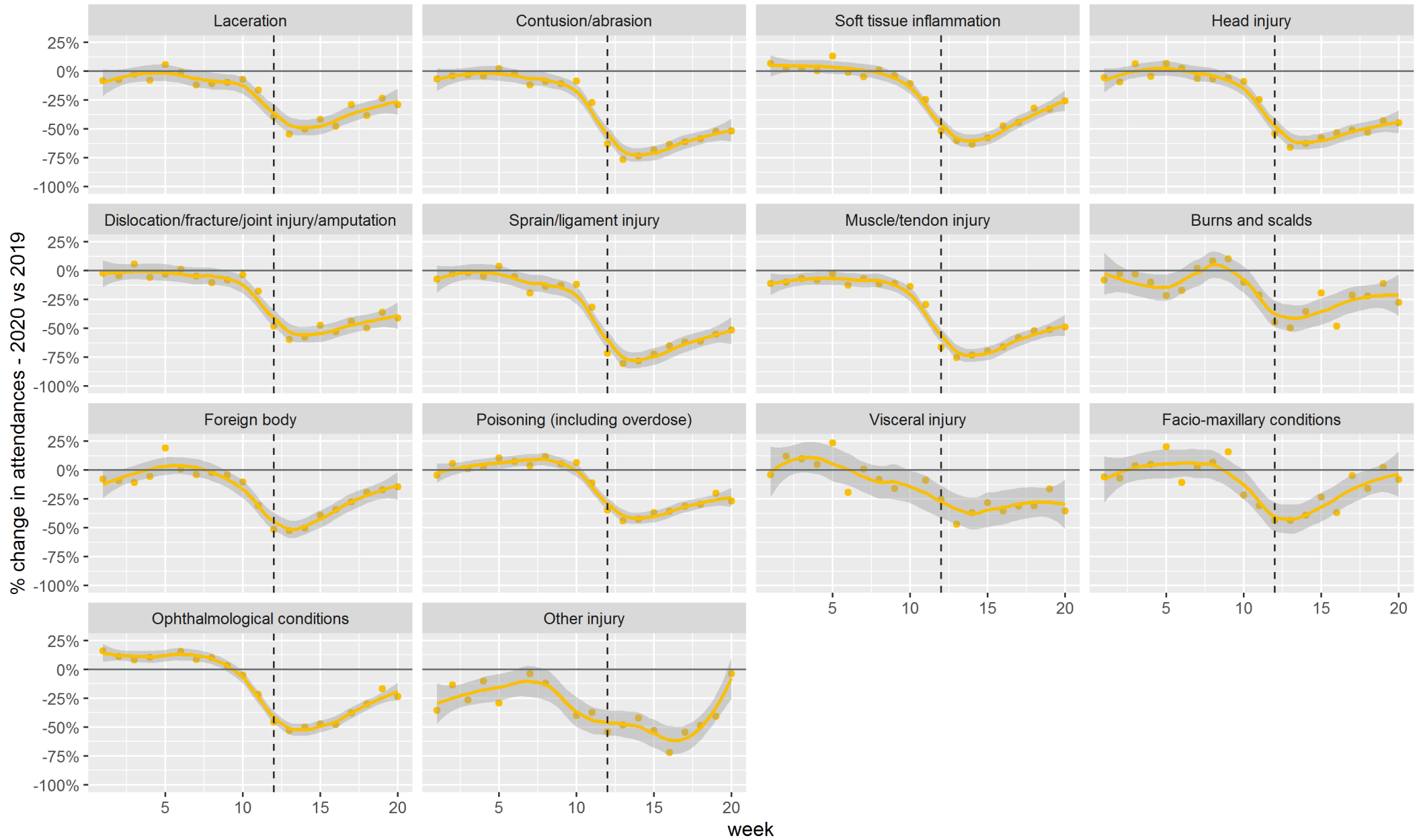


% change in attendances at a subset of 24hr consultant-led emergency departments
by presentation type | Weeks 1-20 | 2020 vs 2019 | England



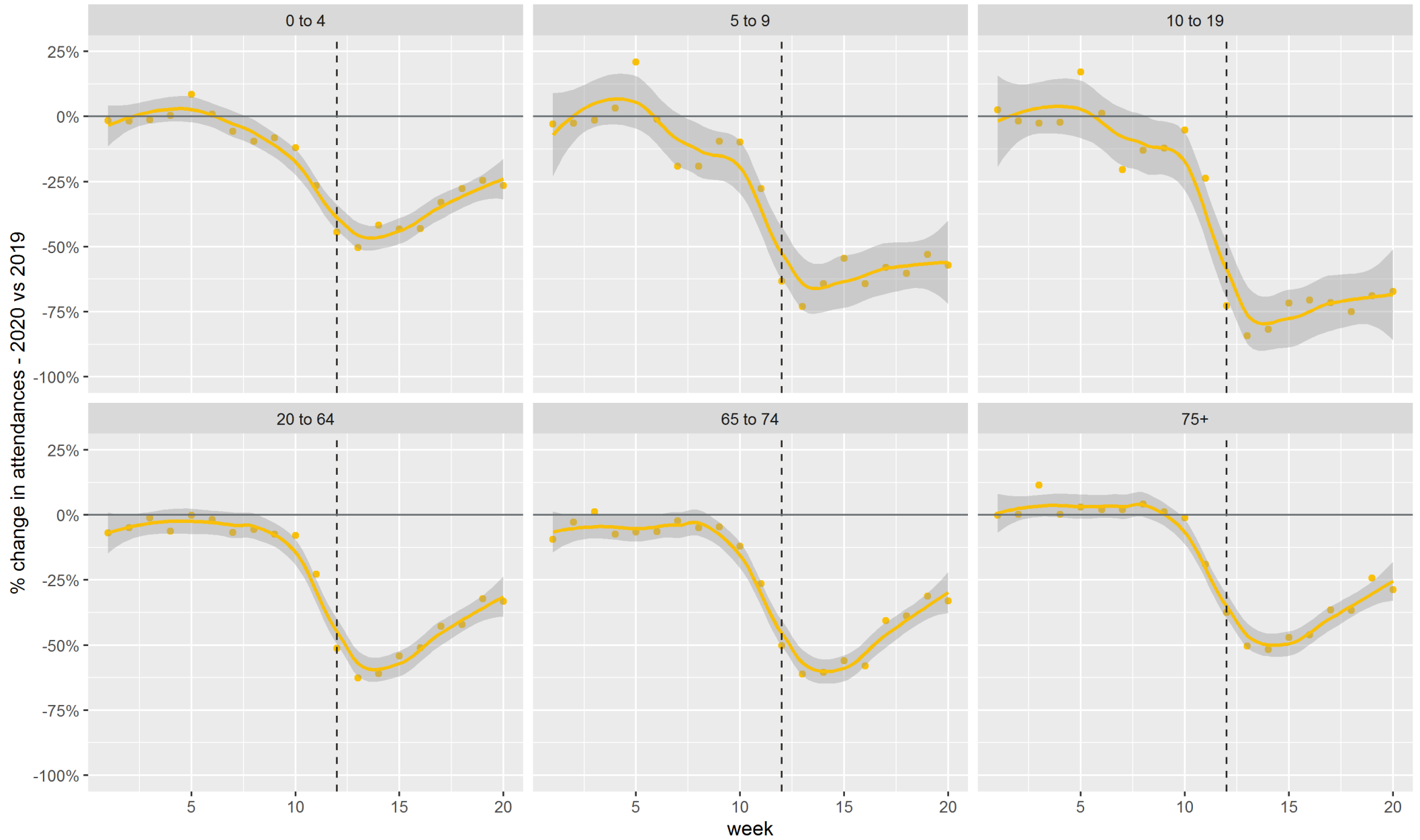
% change in attendances at a subset of 24hr consultant-led emergency departments

Injury presentations by diagnosis | Weeks 1-20 | 2020 vs 2019 | England



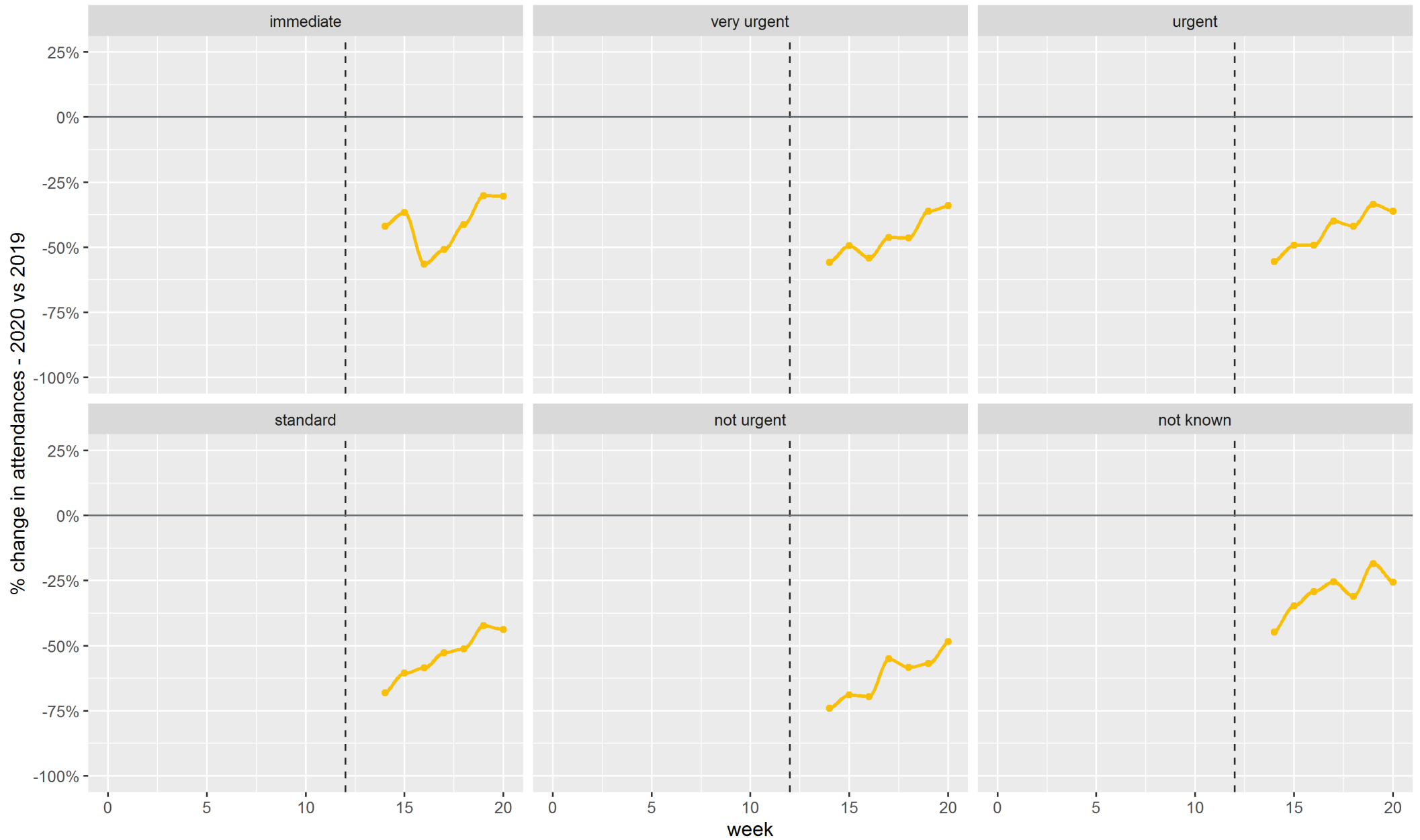
% change in attendances at a subset of 24hr consultant-led emergency departments

Injury presentations by age group | Weeks 1-20 | 2020 vs 2019 | England



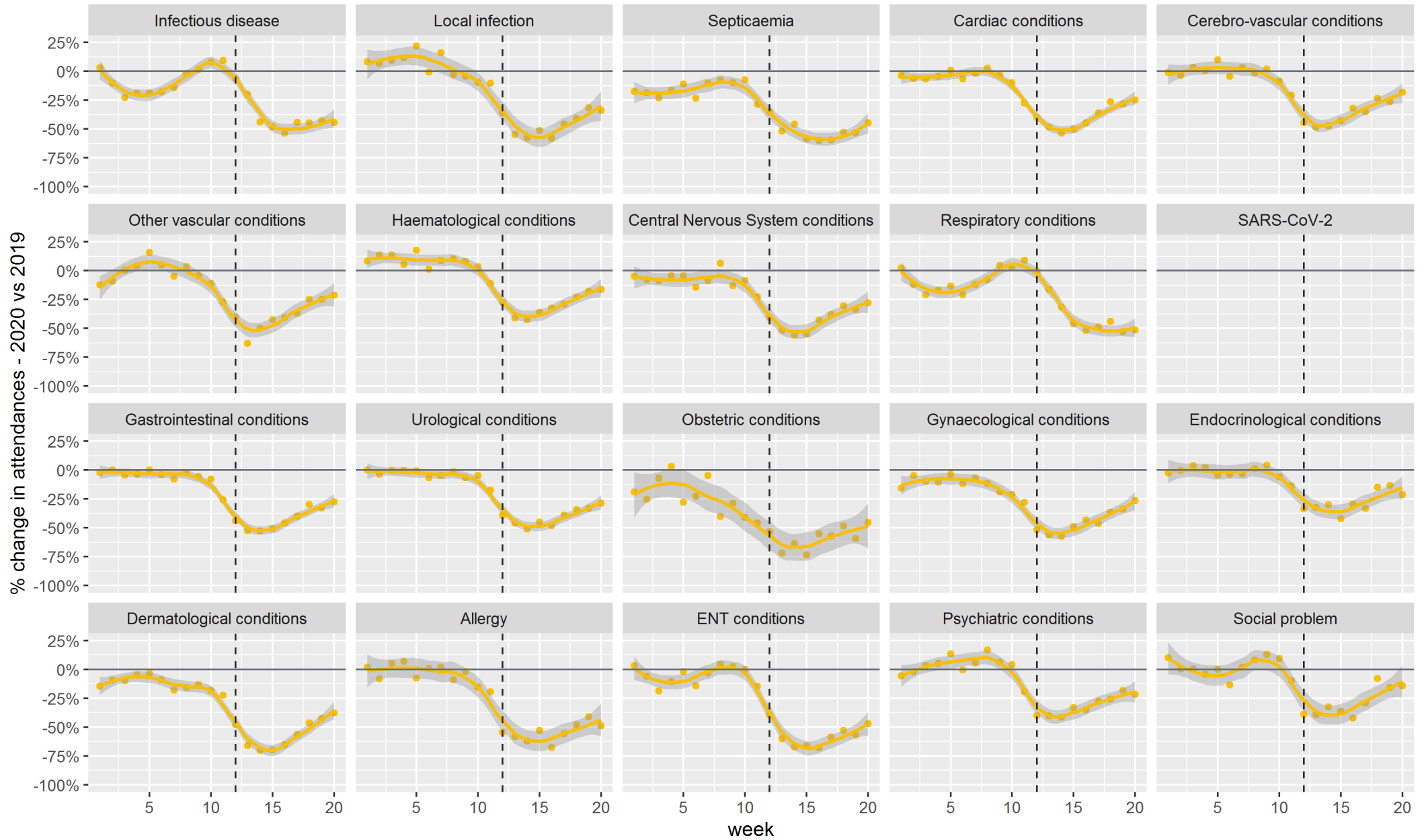
% change in attendances at a subset of 24hr consultant-led emergency departments

Injury presentations by acuity level | Weeks 14-20 | 2020 vs 2019 | England



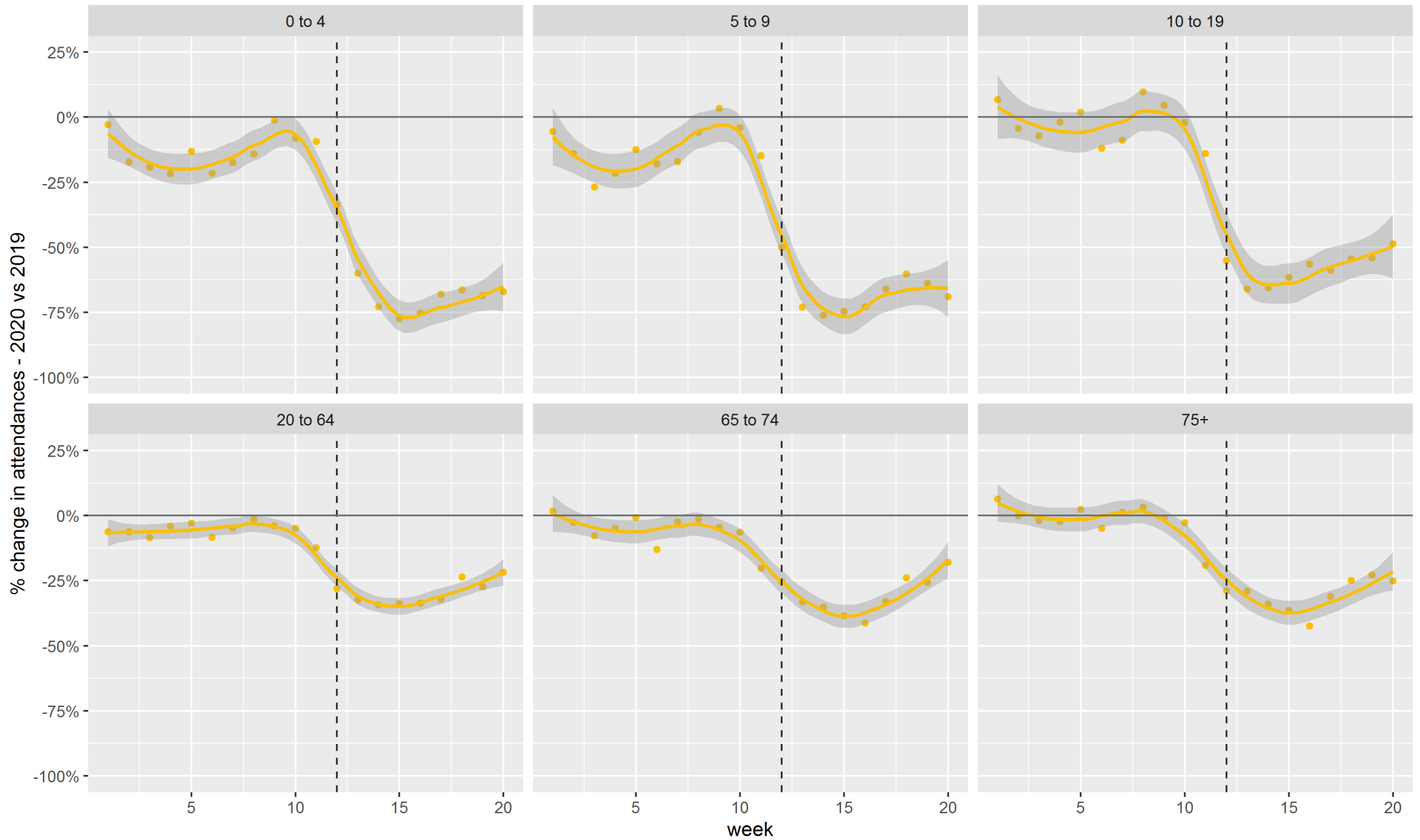
% change in attendances at a subset of 24hr consultant-led emergency departments

Illness presentations by diagnosis | Weeks 1-20 | 2020 vs 2019 | England



% change in attendances at a subset of 24hr consultant-led emergency departments

Illness presentations by age group | Weeks 1-20 | 2020 vs 2019 | England



% change in attendances at a subset of 24hr consultant-led emergency departments

Illness presentations by acuity level | Weeks 14-20 | 2020 vs 2019 | England

