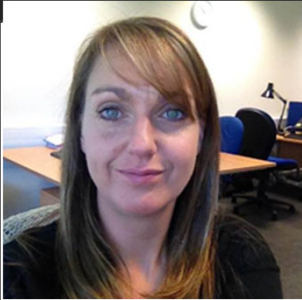


Pop-up vaccine clinics in mosques in Nottingham



Overview

Reference: 23

Location: Nottingham

Target Group: Muslims

Initiative type: Pop-up
vaccination clinics

Contact

Website:

www.healthandcarenotts.co.uk/care-in-my-area/nottingham-city-icp

Email:

nnccg.citylocalityteam@nhs.net

Twitter:

@NottmCityICP

Top Tip

Listen to your community and empower them. Recognise the parity of health & care professionals and communities working together to deliver.

Why is this important to us?

We knew that we needed to build confidence in the vaccine with our Muslim community. This was in line with the national picture for COVID-19 vaccine uptake and our local experience with flu vaccination.

What are we doing?

Nottingham City ICP formed a Vaccine Coordination Group, to bring its partner organisations together to understand how best to support our population to take up the vaccine. The ICP linked with the Nottingham Council of Mosques and local Muslim leaders to identify two mosques (Fiveways Islamic Centre and the Karimia Institute) to hold pop up vaccination clinics. They are in different parts of the City, which helped to improve accessibility. Q&A sessions led by religious leaders and GPs were organised. People are able to book a vaccination appointment via the mosques, to ensure a personalised approach. The Nottingham City Council Customer Hub has also called people to let them know they are eligible for the vaccine and offer support to book them into a clinic. This has been useful for people who are digitally excluded or not wishing to ring the main booking line. The Customer Hub can also book people into the free transport service to travel to and from their vaccination, if required. We have been led by the community in how we have promoted the initiative including via social media, local mosque networks, radio, and leaders contacting their congregants by telephone. The vaccination clinics are delivered by our local GP practice teams. Although the Imams have confirmed that the COVID-19 vaccine is acceptable to have during Ramadan, we have recognised that some people will be more hesitant to take the vaccine at this time, so we organised more appointments before Ramadan to meet expected demand.

Who is involved?

The overall vaccine programme in Notts is delivered as a whole system partnership through the LRF. The ICP itself has a wide ranging partnership across health, care and community voluntary sector who have all contributed to this work in the City. Key partners were the CCG, Nottingham Council of Mosques, Muslim leaders and community, Nottingham City Council, local GP teams and Nottinghamshire Healthcare Trust. The ICP has played a key role in bringing everyone together to work towards a common goal for Nottingham City within the wider system vaccination programme.

What works for us?

Feedback from the community has been very positive; particularly, the Q&A sessions have been credited with improving vaccine confidence. Understanding the issue and listening to the community has been central to co-producing an effective intervention. **All vaccination slots at the mosque have been taken up, with a very low rate of non-attendance.**