

kurtosis

Heaviness past, heaviness present and heaviness future

Measuring, describing and finding solutions to exit
block in acute hospitals

Neil Pettinger | 2 October 2025

The agenda

- 1) Terms and conditions
- 2) The Unscheduled Care Pathway Diagram
- 3) The Flow_ology Grid
- 4) The Gold Run
- 5) The Fullness Hypothesis (is dead)...
- 6) (Long live the) Heaviness Hypothesis!
- 7) Questions, comments and criticisms

1

Terms and conditions

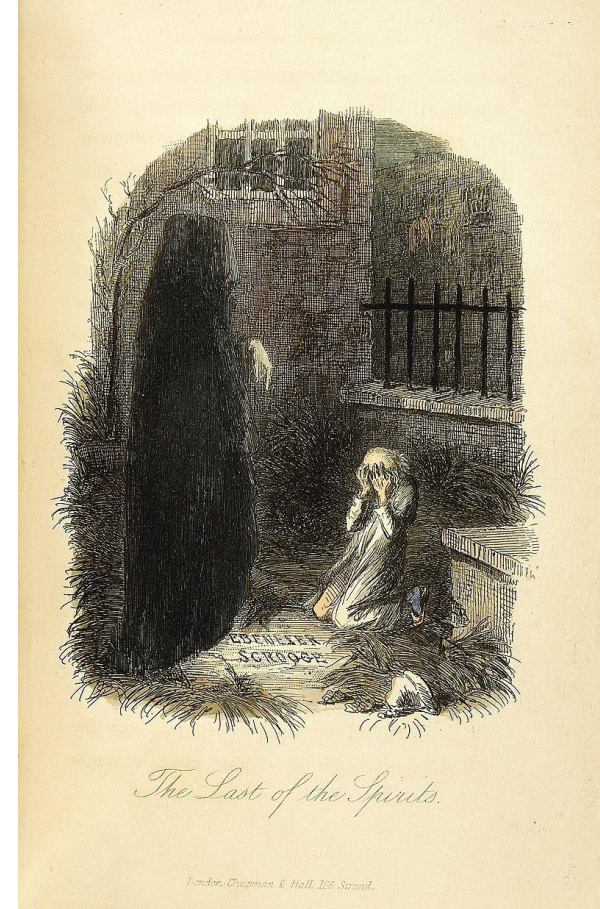
Christmas Past



Christmas Present



Christmas Yet to Come



Heaviness Past

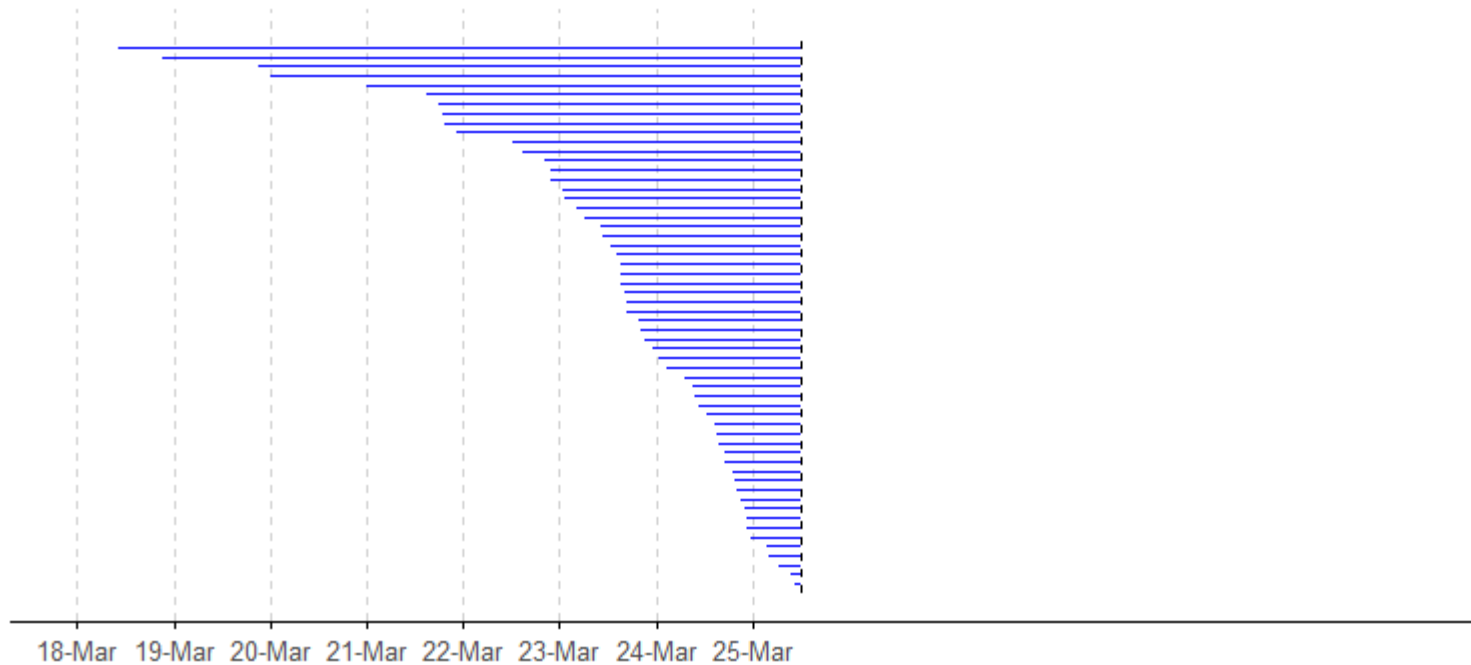
AMU Heaviness

Mon 25 March 2024 | 12:00

No. of AMU inpatients captured by the snapshot = 58

Average length of stay so far = 47.6 hours

Accumulated bed hours = 2,761



Heaviness Yet to Come

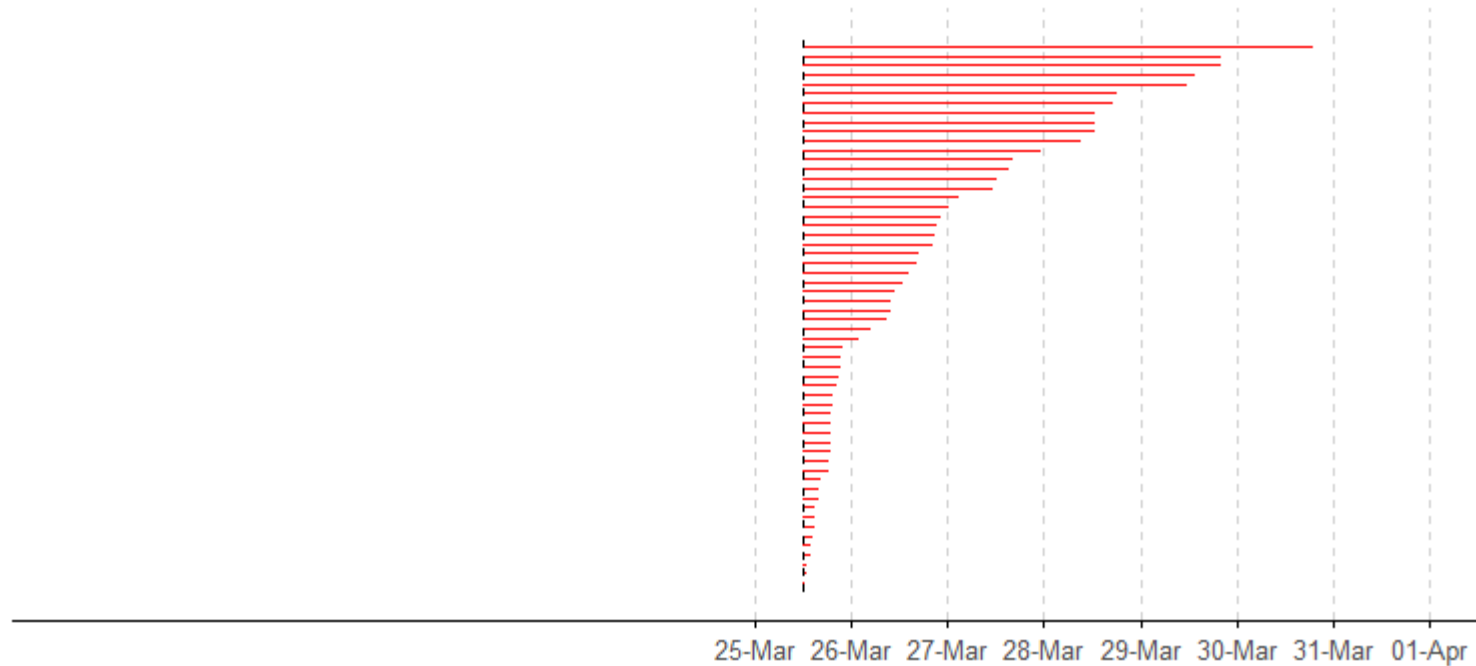
AMU Future Heaviness

Mon 25 March 2024 | 12:00

No. of AMU inpatients captured by the snapshot = 58

Average length of stay still to come = 31.1 hours

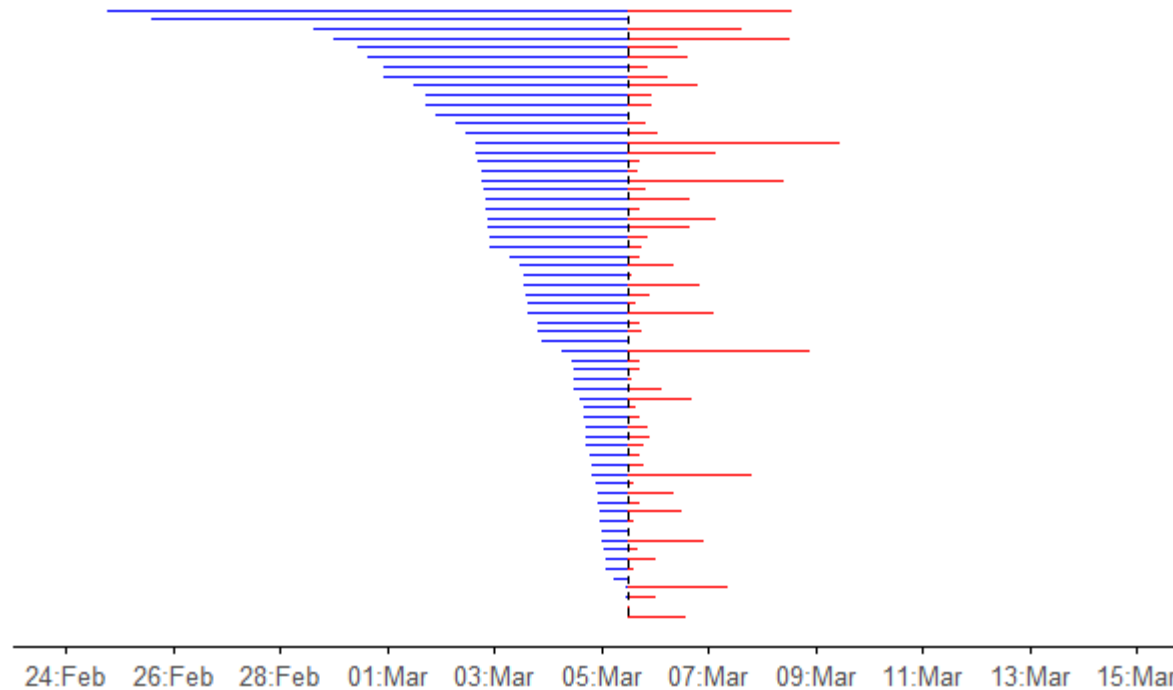
Bed hours still to come = 1,804



Heaviness Present

Heaviness past and heaviness still to come

65 AMU inpatients overlapped midday on 5th March 2024

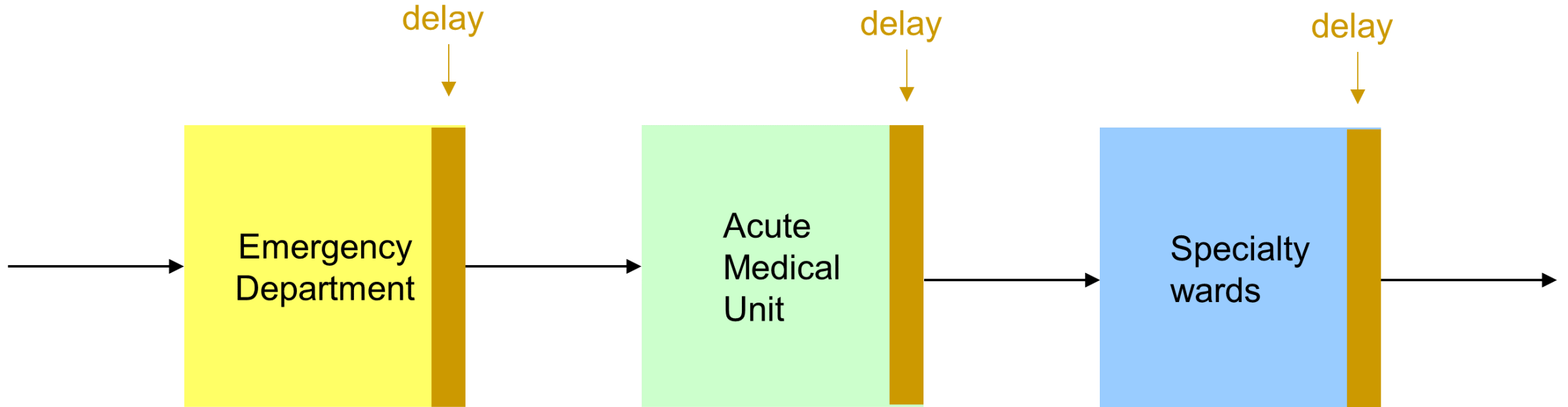


2

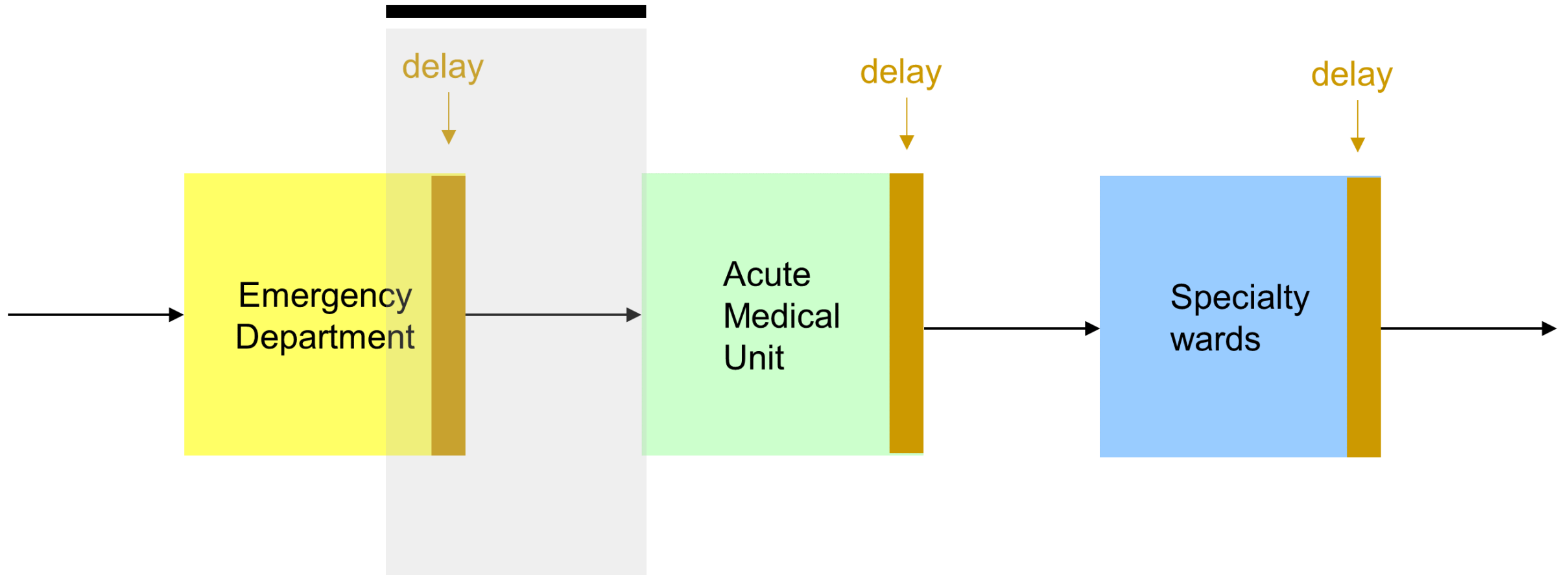
The Unscheduled Care Pathway Diagram

The Unscheduled Care Pathway

(massively over-simplified!)



The ED to AMU handover



3

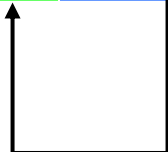
The Flow_ology Grid

The Flow_ology grid

Tue 25 th November: 70.5% compliance			
	A&E	Assessment	Wards
How many?	166 attendances	49 admissions	59 admissions
How long?	240 minutes	22.0 hours	4.6 days
How full?	25.7 patients	49.1 patients	411 patients

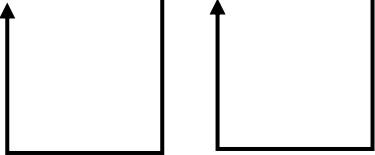
The chain reaction

Tue 25 th November: 70.5% compliance			
	A&E	Assessment	Wards
How many?	166 attendances	49 admissions	59 admissions
How long?	240 minutes	22.0 hours	4.6 days
How full?	25.7 patients	49.1 patients	411 patients



The chain reaction

Tue 25 th November: 70.5% compliance			
	A&E	Assessment	Wards
How many?	166 attendances	49 admissions	59 admissions
How long?	240 minutes	22.0 hours	4.6 days
How full?	25.7 patients	49.1 patients	411 patients



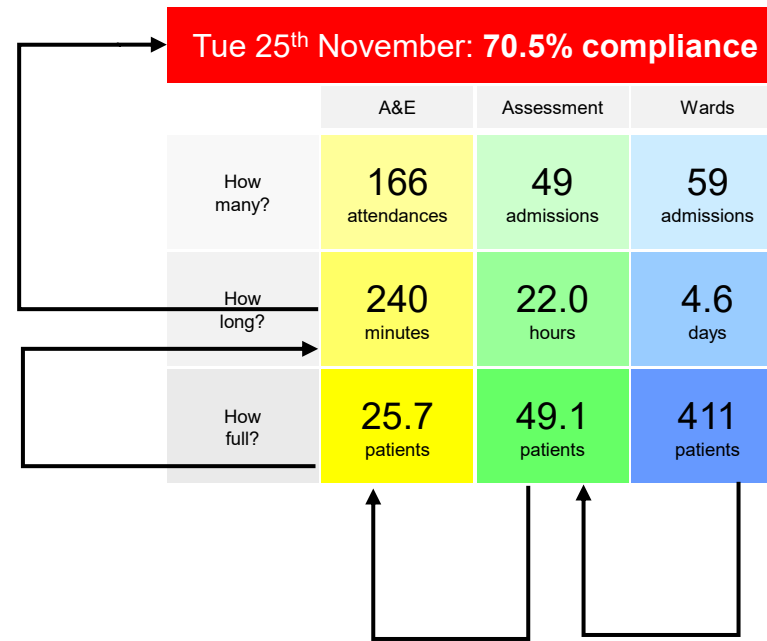
The diagram below the table shows two feedback loops. Two vertical lines descend from the 'How full?' row. The left line turns left and then up to point at the 'How long?' row under the 'A&E' column. The right line turns right and then up to point at the 'How long?' row under the 'Wards' column.

The chain reaction

Tue 25 th November: 70.5% compliance			
	A&E	Assessment	Wards
How many?	166 attendances	49 admissions	59 admissions
How long?	240 minutes	22.0 hours	4.6 days
How full?	25.7 patients	49.1 patients	411 patients

The diagram illustrates a chain reaction of feedback loops. A horizontal arrow points from the 'How long?' row to the 'How full?' row. Below the 'How full?' row, two vertical arrows point upwards to the 'How long?' and 'How many?' rows respectively, indicating that patient volume directly impacts both duration and frequency of care.

The chain reaction



4

The Gold Run

Blockbusters



Search Wikipedia

Search

Kur

Blockbusters (British game show)

1 language

Main menu

hide

[Main page](#)

[Contents](#)

[Current events](#)

[Random article](#)

[About Wikipedia](#)

[Contact us](#)

[Donate](#)

[Switch to old look](#)

[Contribute](#)

[Help](#)

[Learn to edit](#)

[Community portal](#)

[Article](#) [Talk](#)

[Read](#)

[Edit source](#)

[View history](#)



From Wikipedia, the free encyclopedia

This article is about the television game show. For other uses, see [Blockbuster](#).



This article **needs additional citations for verification**. Please help [improve this article](#) by [adding citations to reliable sources](#). Unsourced material may be challenged and removed.

Find sources: "Blockbusters" British game show – news · newspapers · books · scholar · JSTOR (August 2010) ([Learn how and when to remove this message](#))

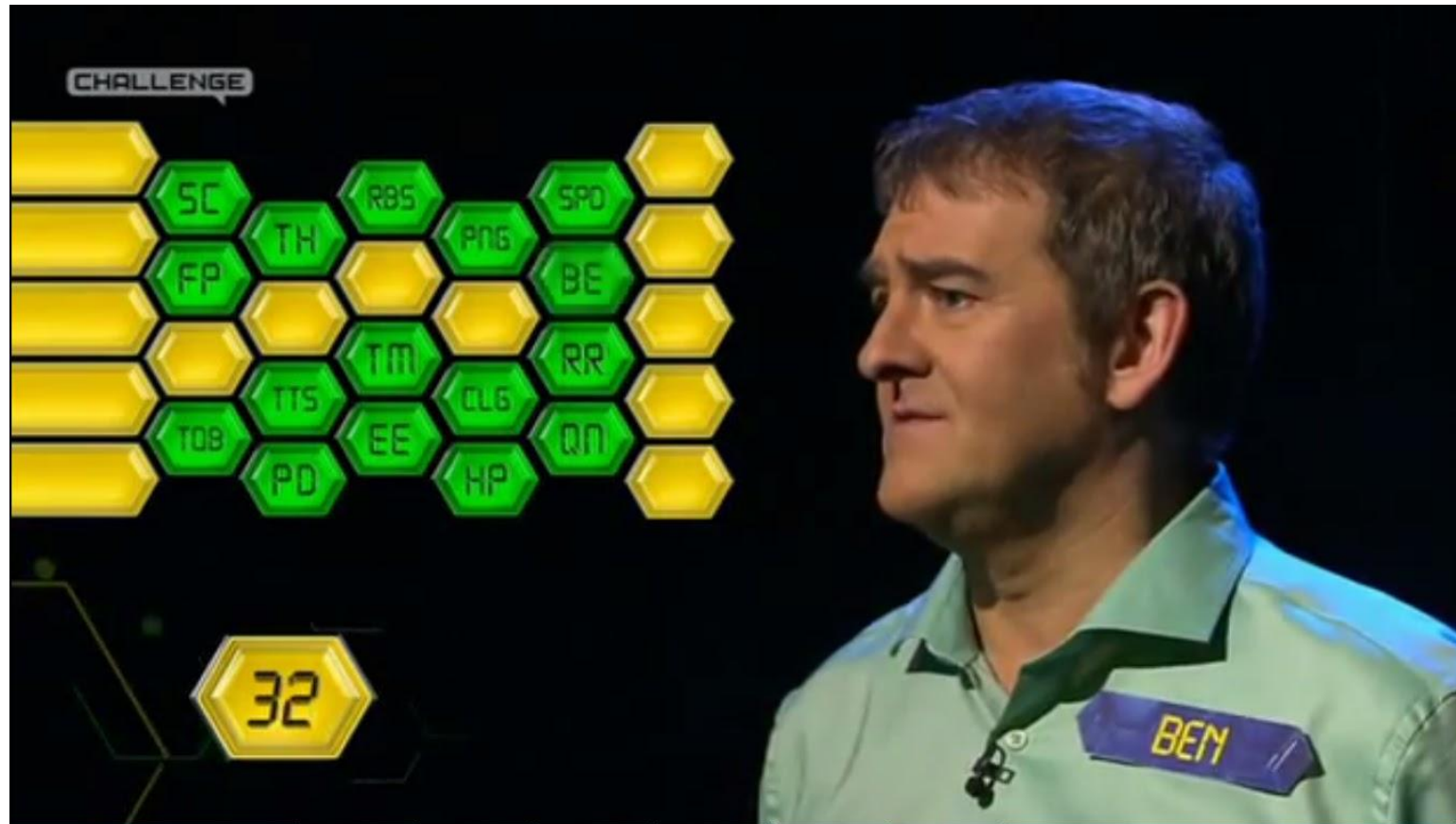
Blockbusters is a British television [quiz show](#) based upon [an American quiz show of the same name](#). A solo player and a team of two answer trivia questions, clued up with an initial letter of the answer, to complete a path across or down a game board of hexagons.

The programme premiered on 29 August 1983 on [ITV](#) and ran for ten series, ending on 19 May 1993. It has since been revived for four additional series, the most recent of which was a comedy version hosted

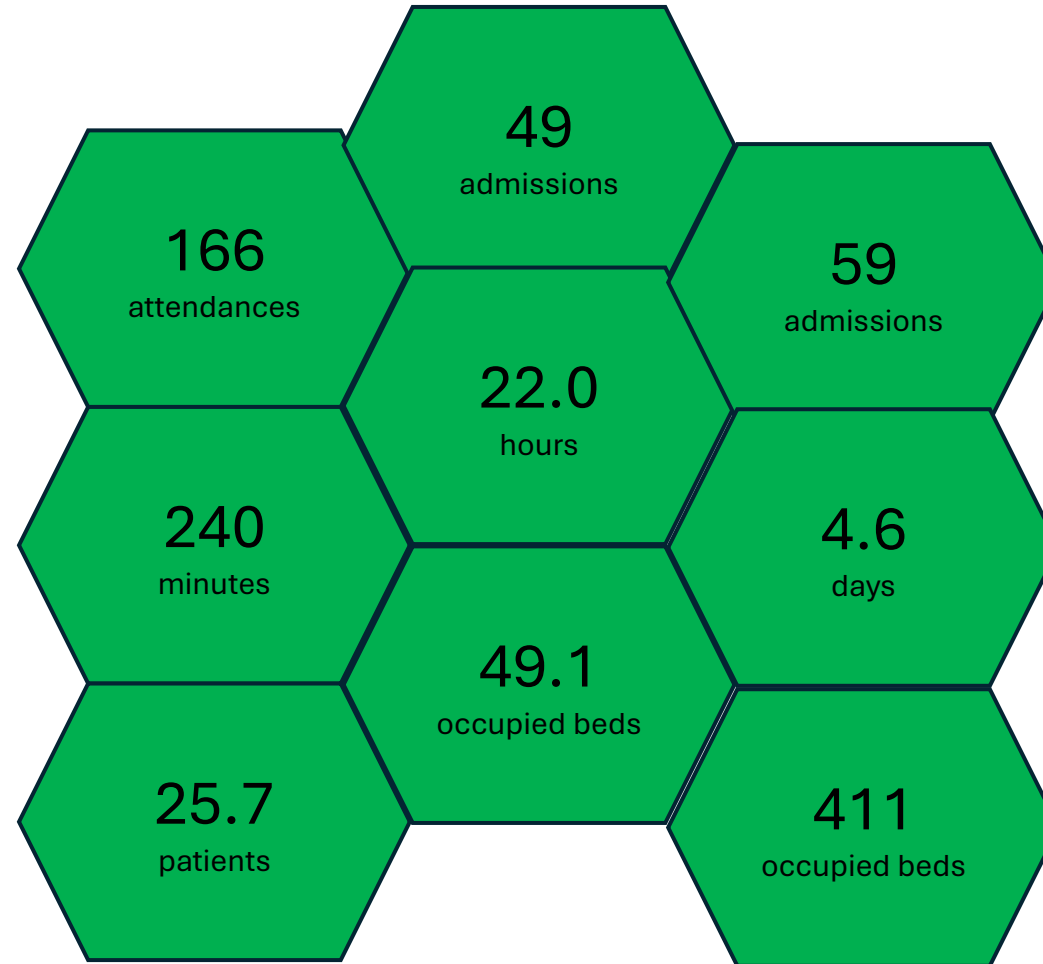
Blockbusters



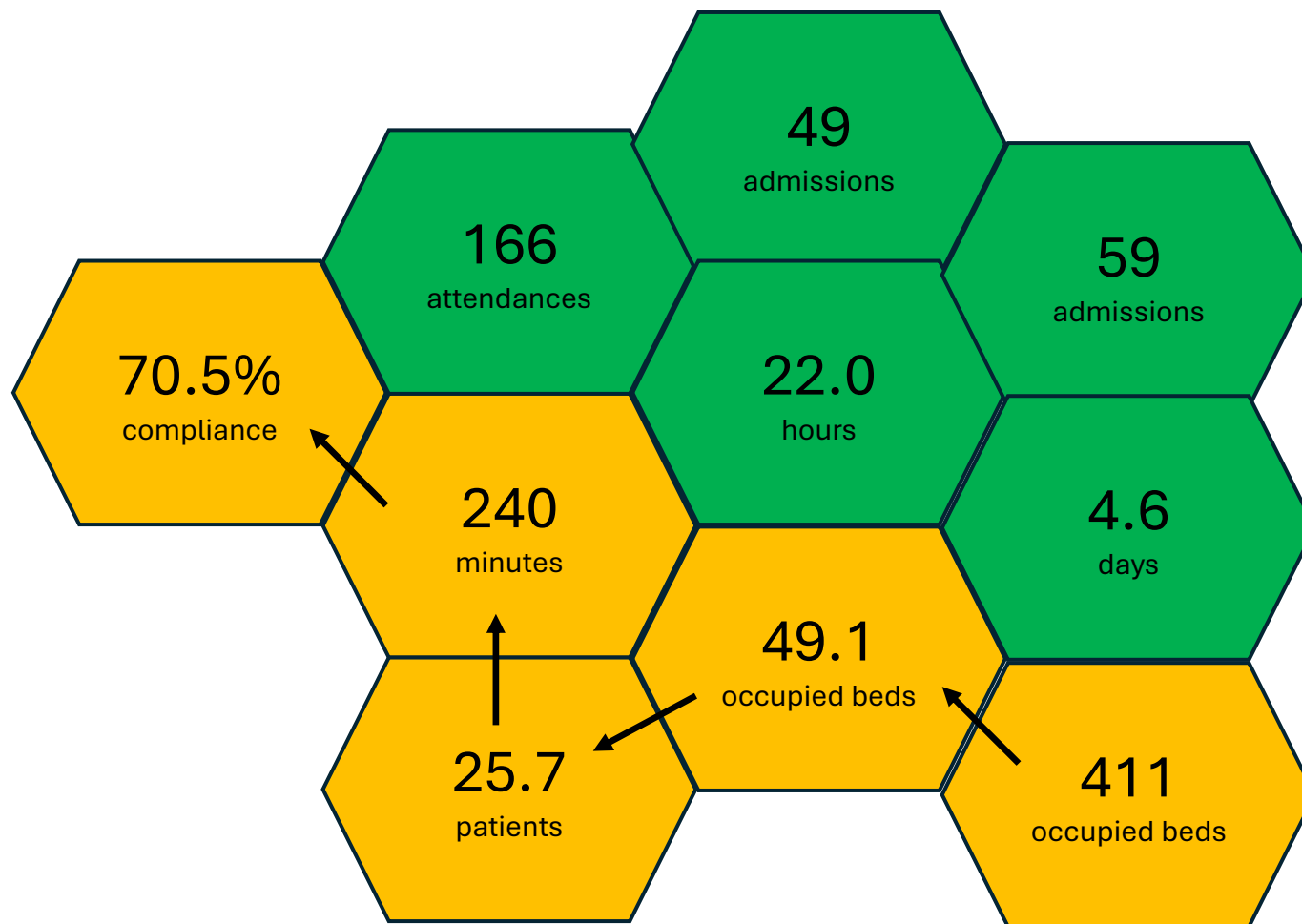
Blockbusters and the gold run



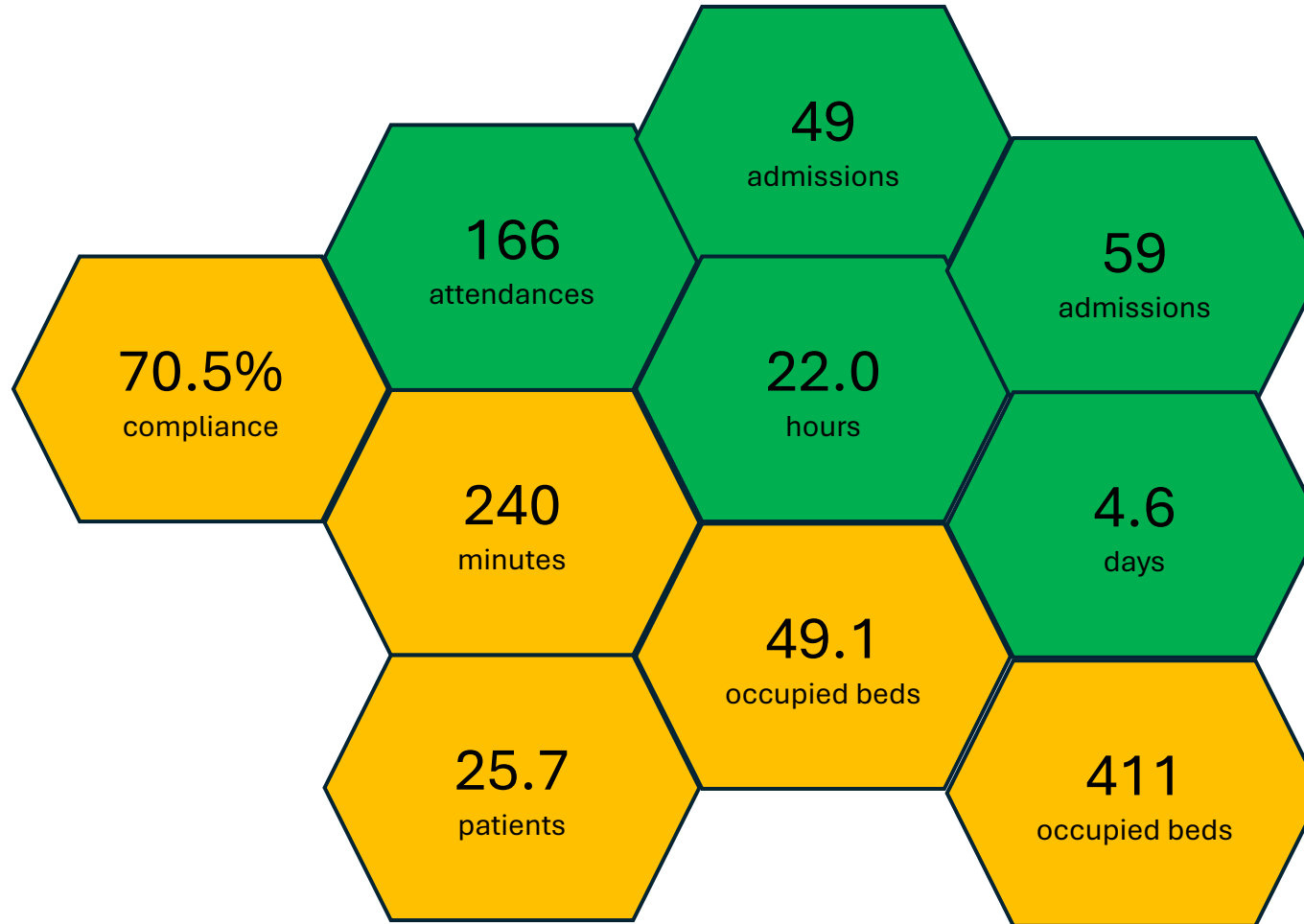
The grid re-designed in the spirit of Blockbusters



The gold run



(Also looks a bit like a turtle. Weird.)

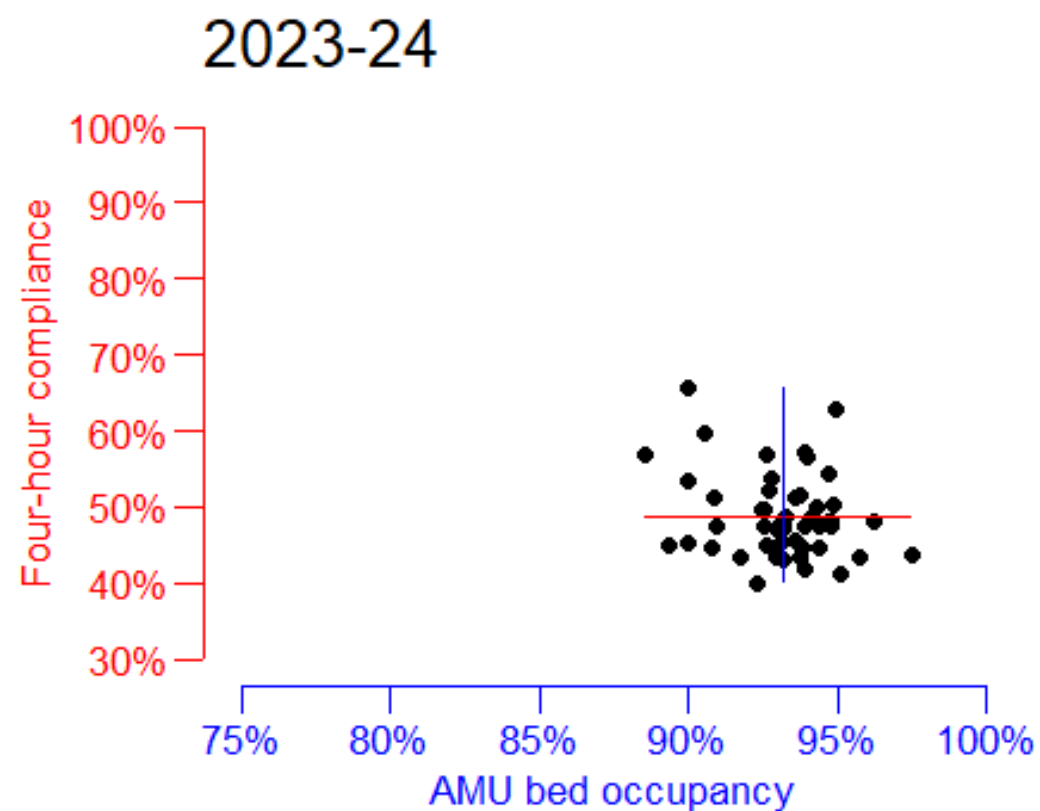
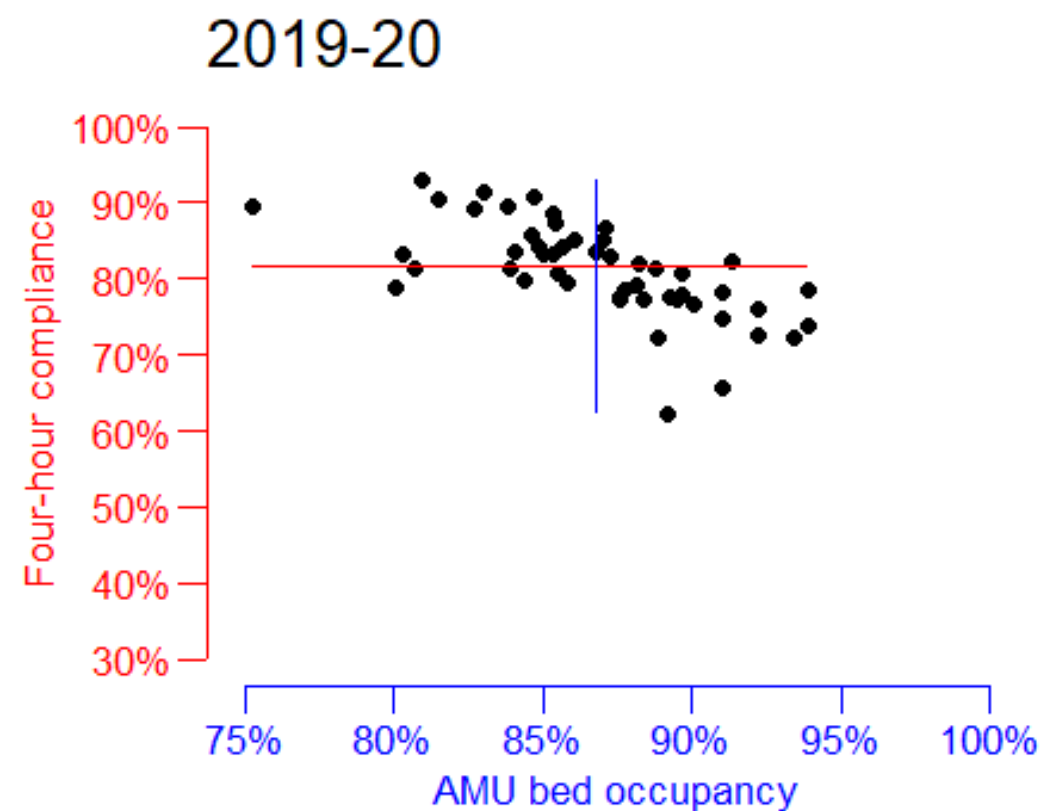


5

The Fullness Hypothesis (is
dead...)

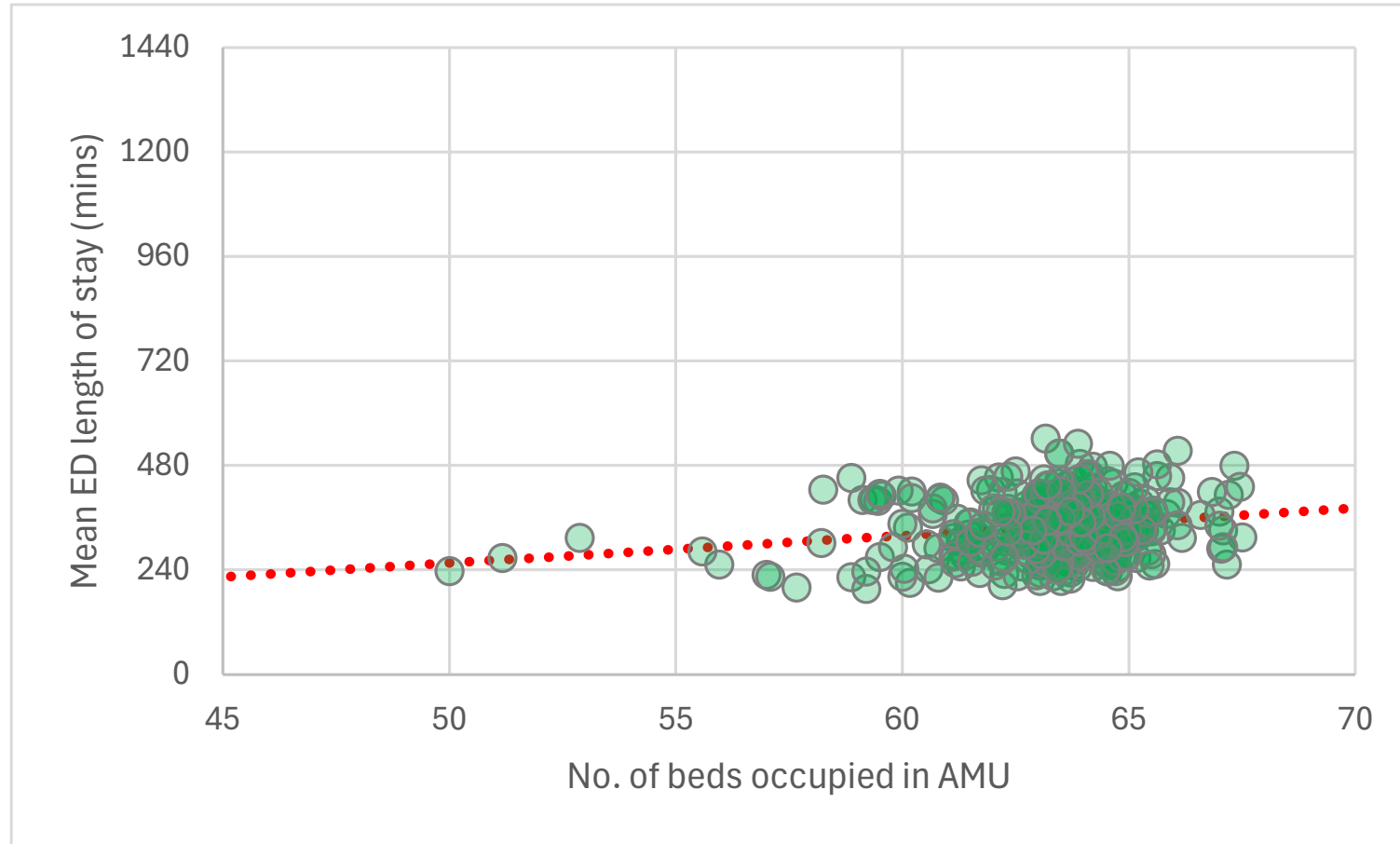
The relationship between AMU bed occupancy and four-hour compliance

Anytown General Hospital



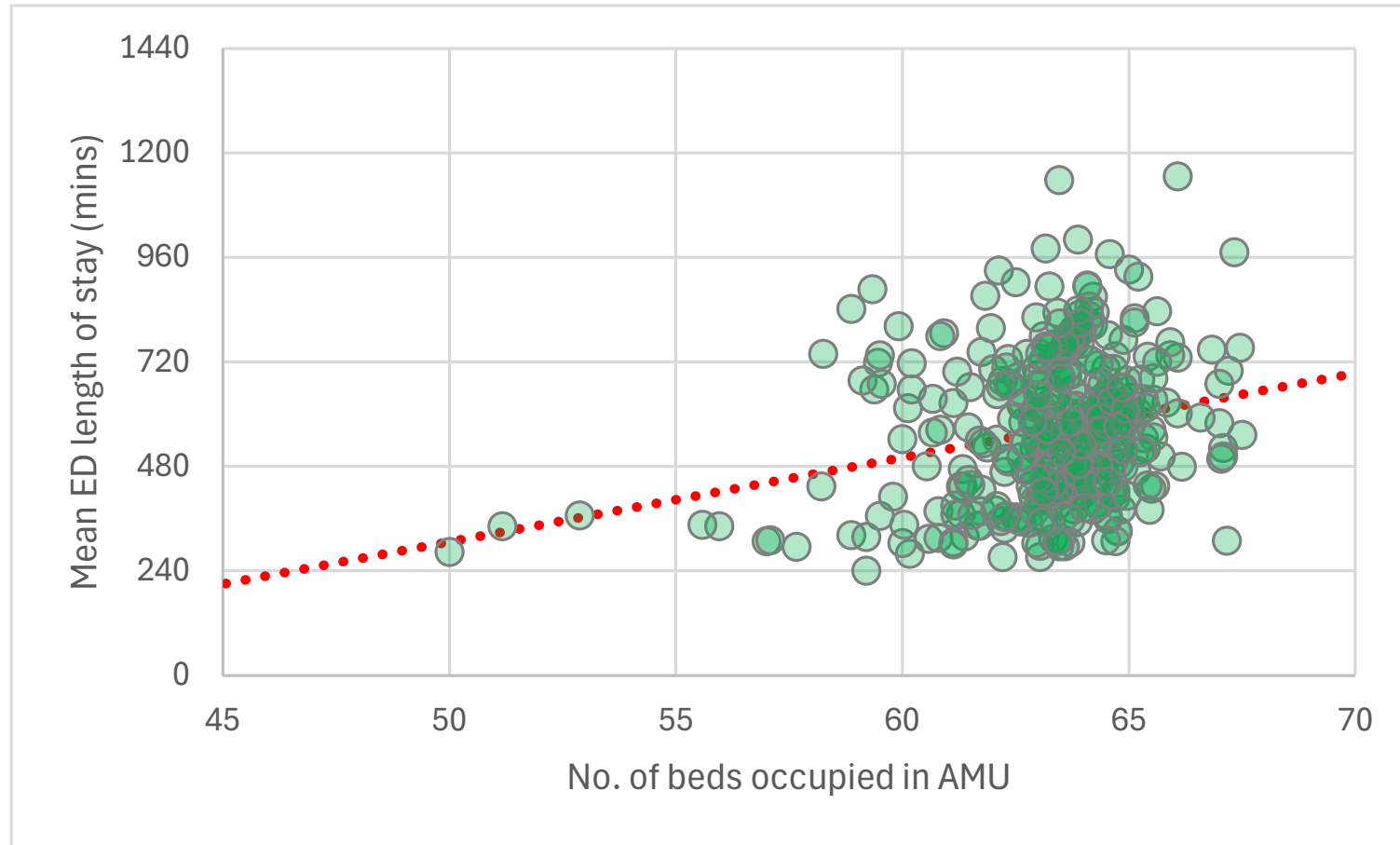
Vertical axis: all ED patients in 2023-24

$r = 0.20$

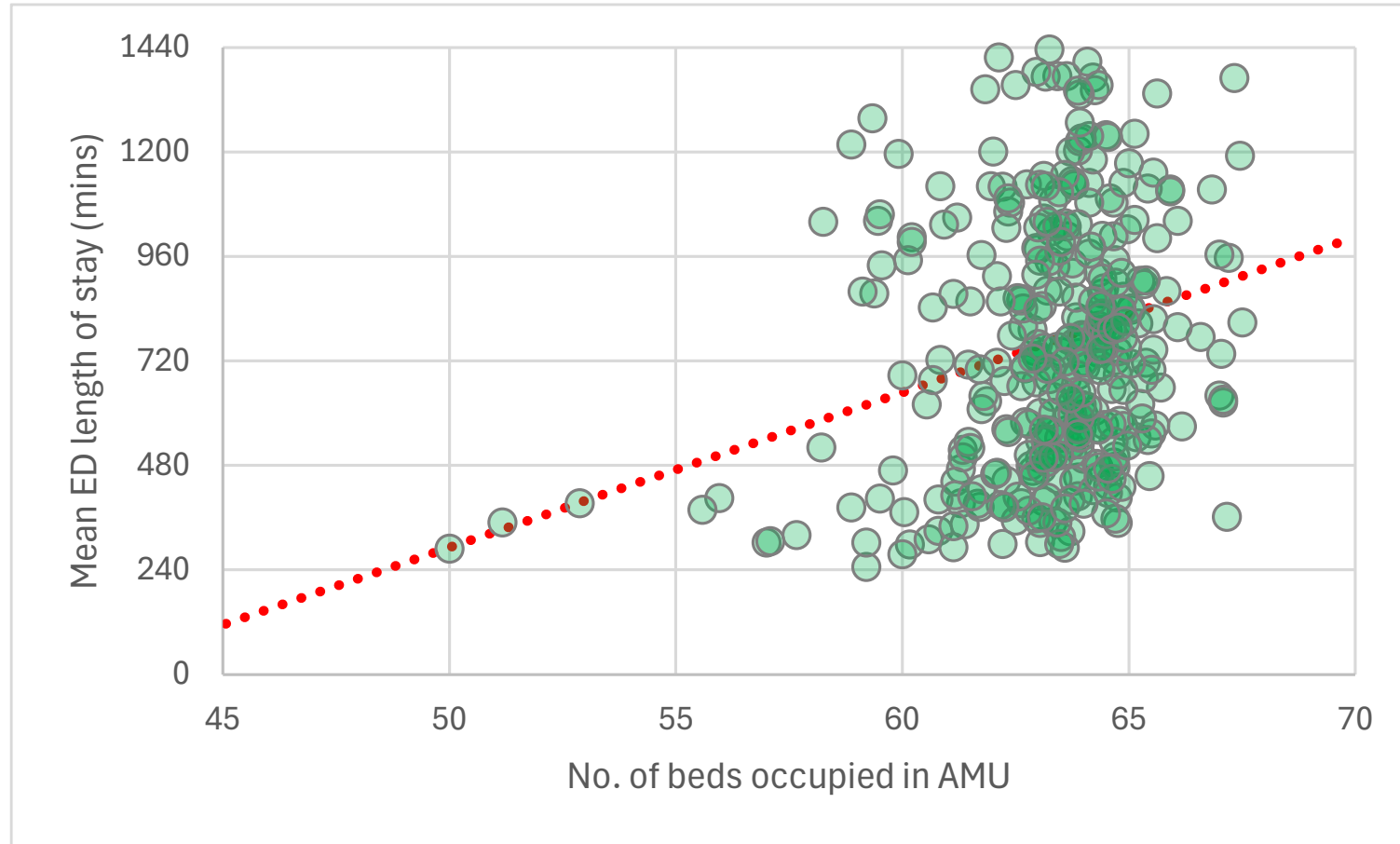


Vertical axis: **admitted** ED patients in 2023-24

$r = 0.24$

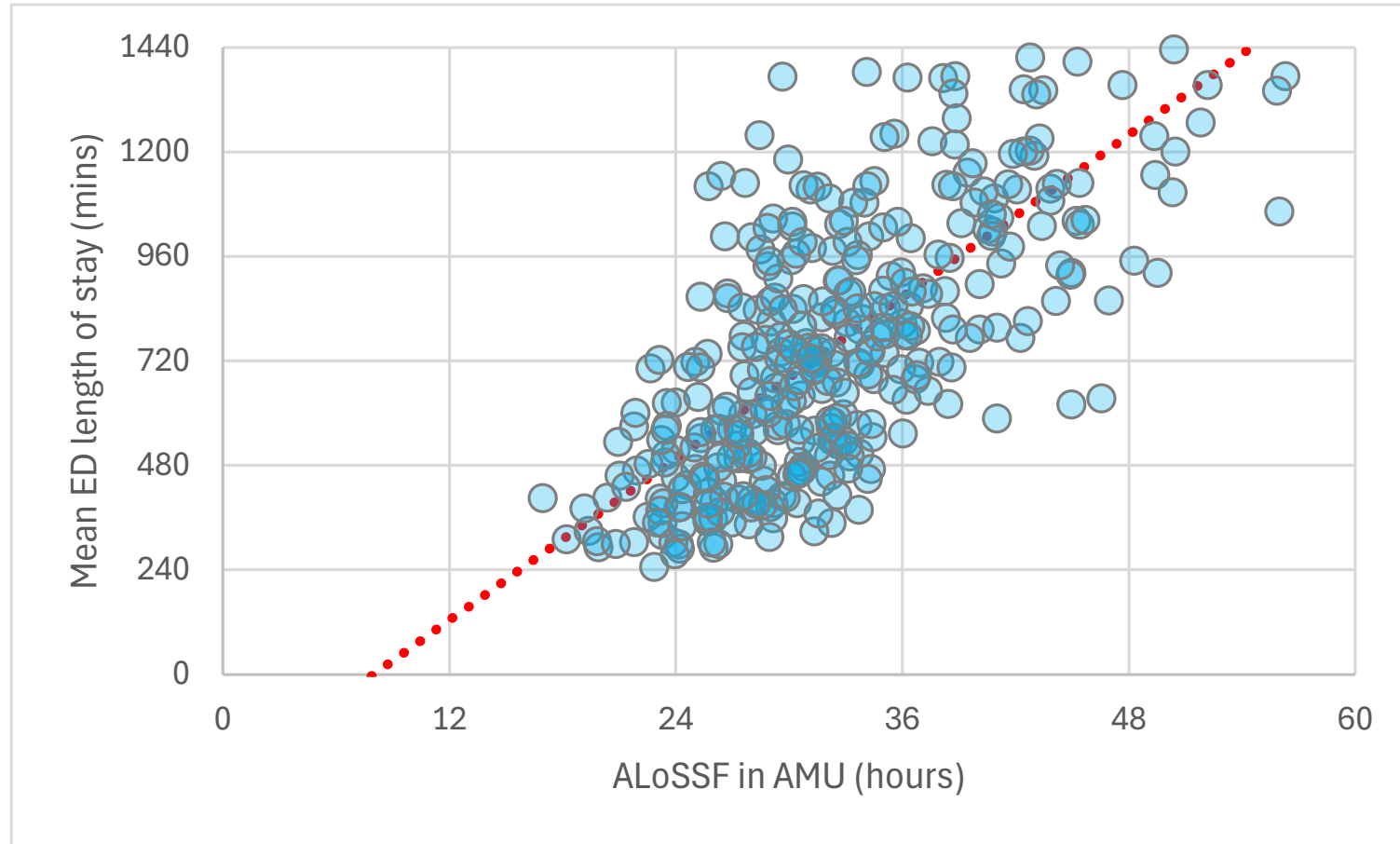


Vertical axis: **AMU-bound** ED patients in 2023-24
 $r = 0.24$



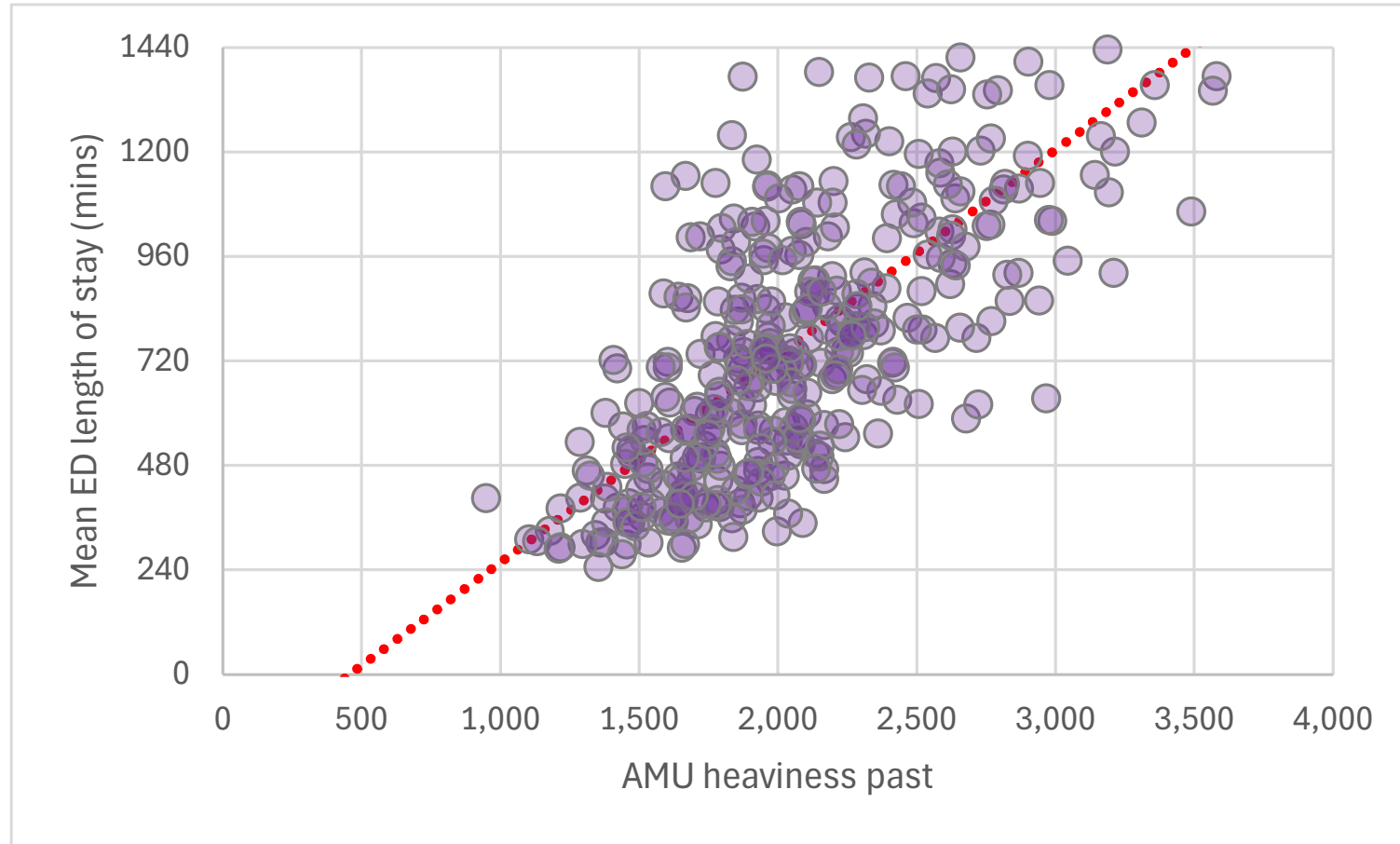
Horizontal axis: **AMU length of stay so far**

$$r = 0.71$$



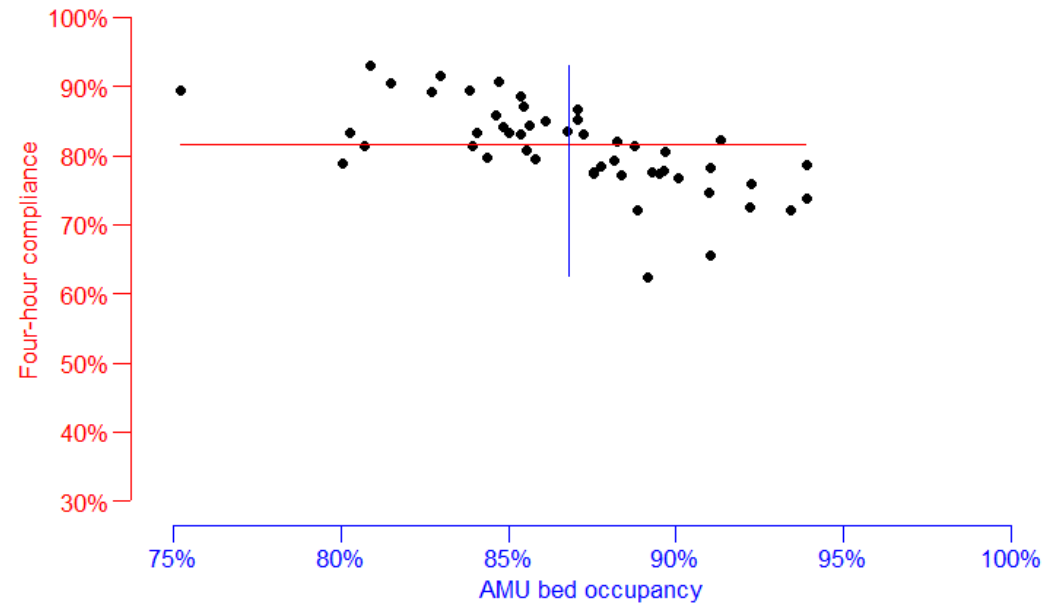
Horizontal axis: **AMU heaviness past**

$r = 0.72$



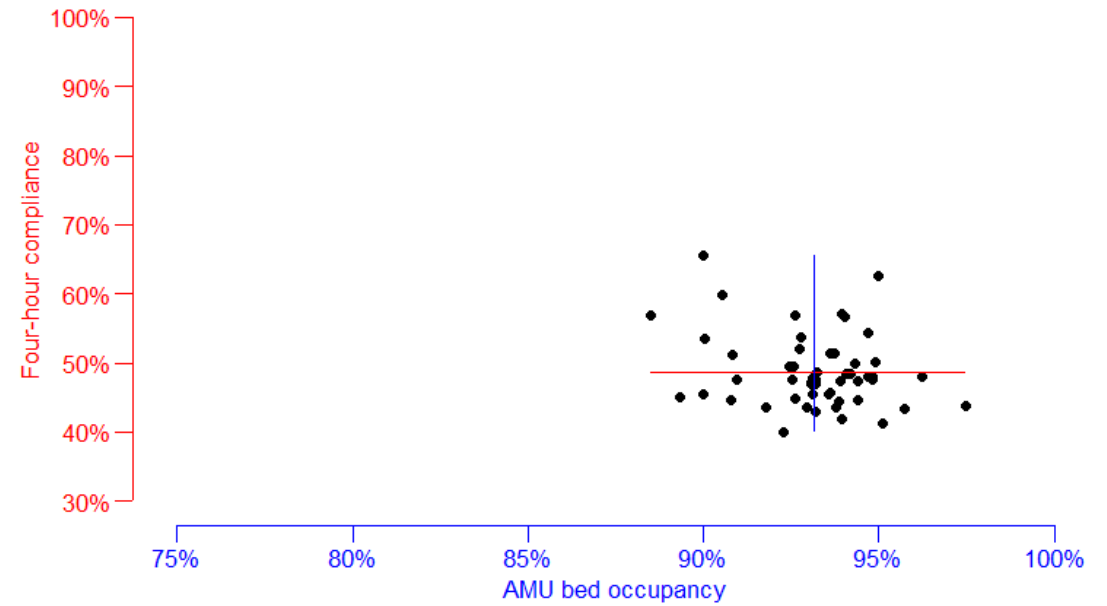
The 52 weeks of 2019-20

Relationship between AMU bed occupancy and four-hour compliance



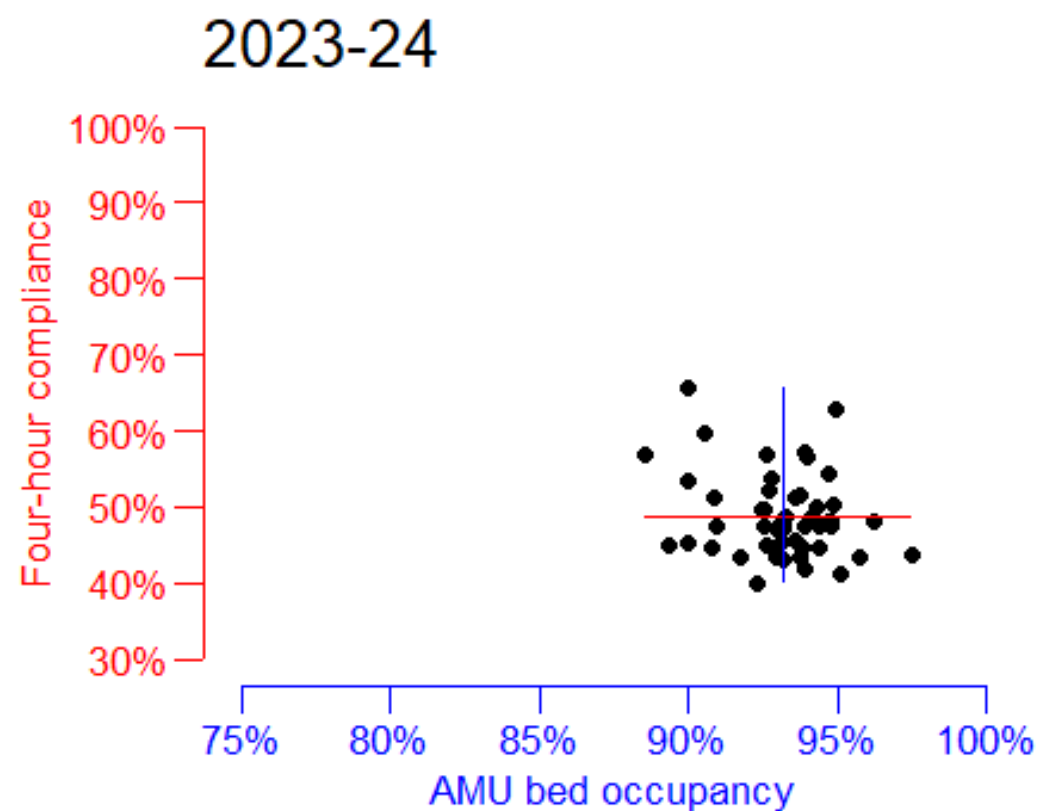
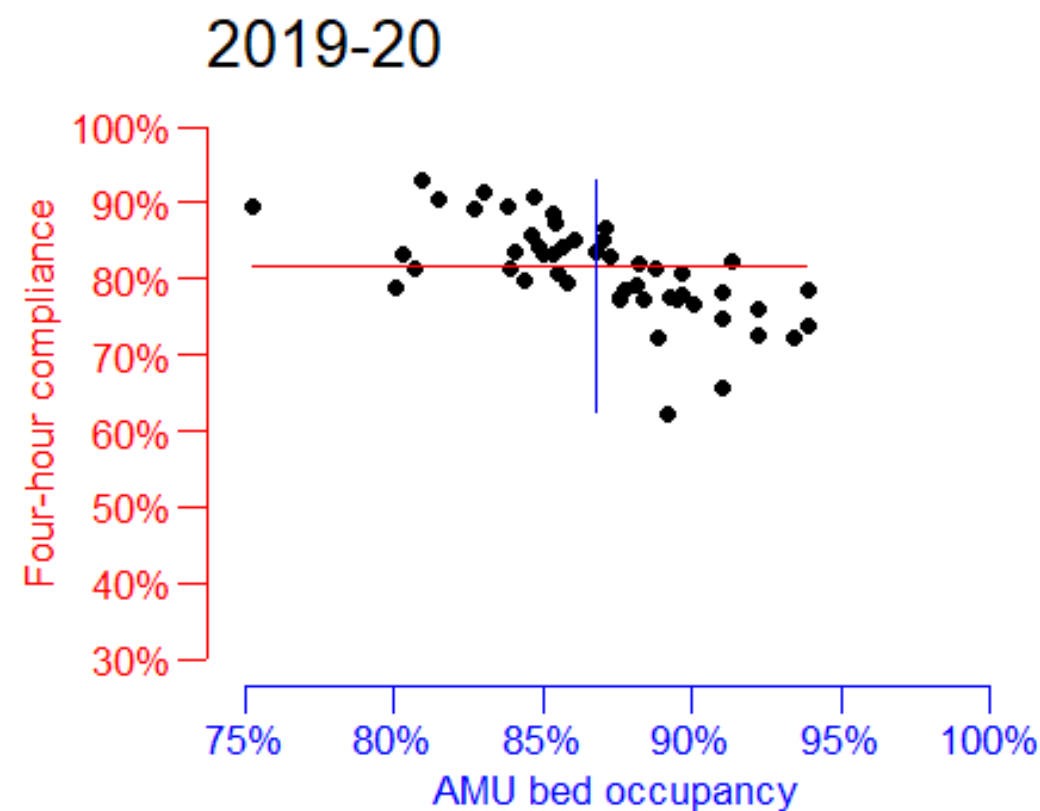
The 52 weeks of 2023-24

Relationship between AMU bed occupancy and four-hour compliance



The relationship between AMU bed occupancy and four-hour compliance

Anytown General Hospital

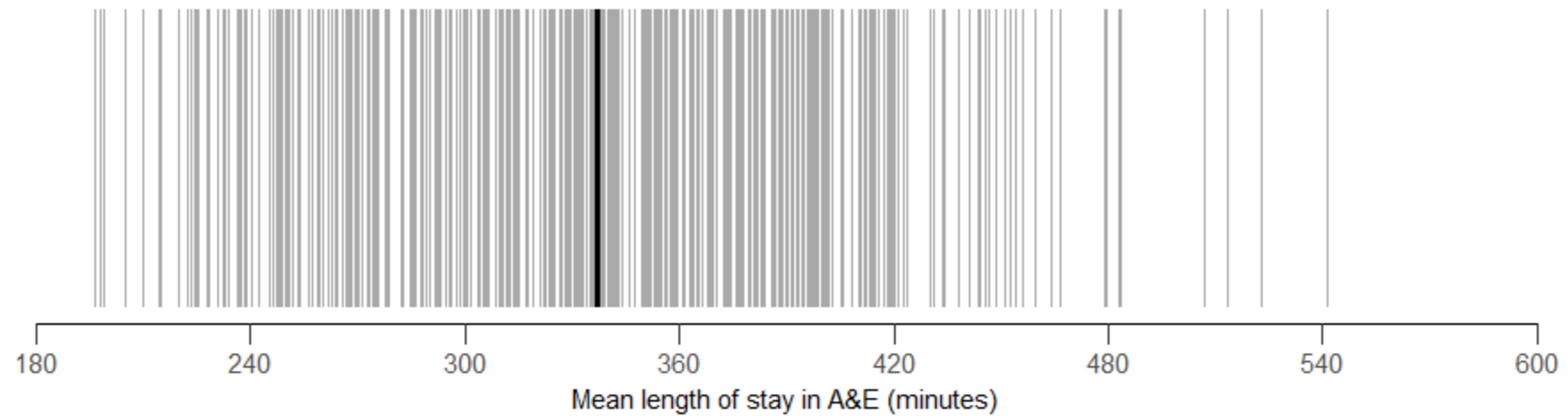


6

(Long live) the Heaviness
Hypothesis!

Quite a lot of variation

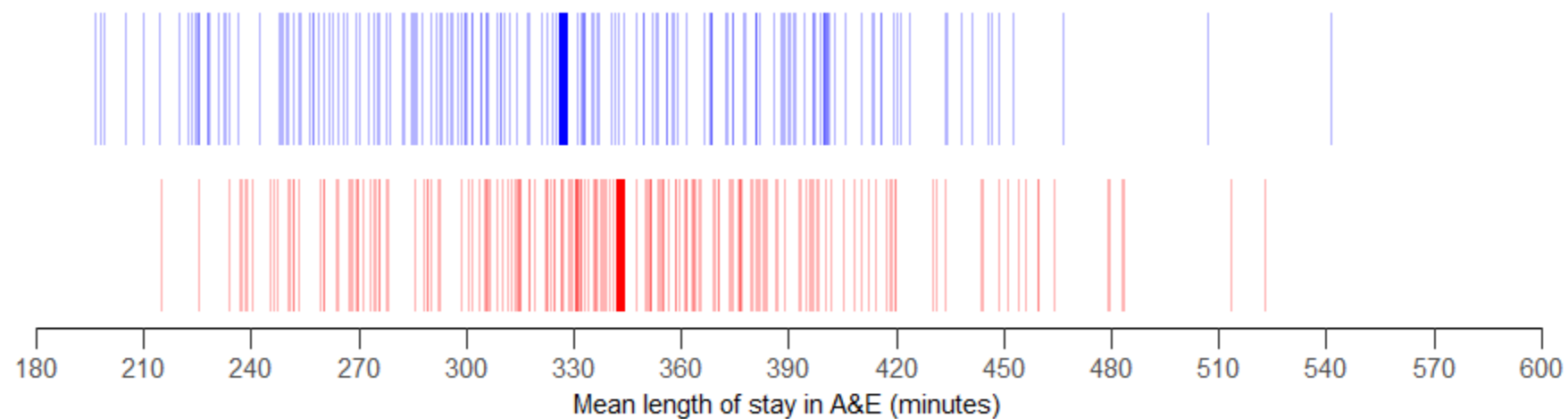
Average length of stay in A&E on each of the 366 days of 2023-24



Source: Patient Management System, Anytown General Hospital

AMU less full and AMU more full

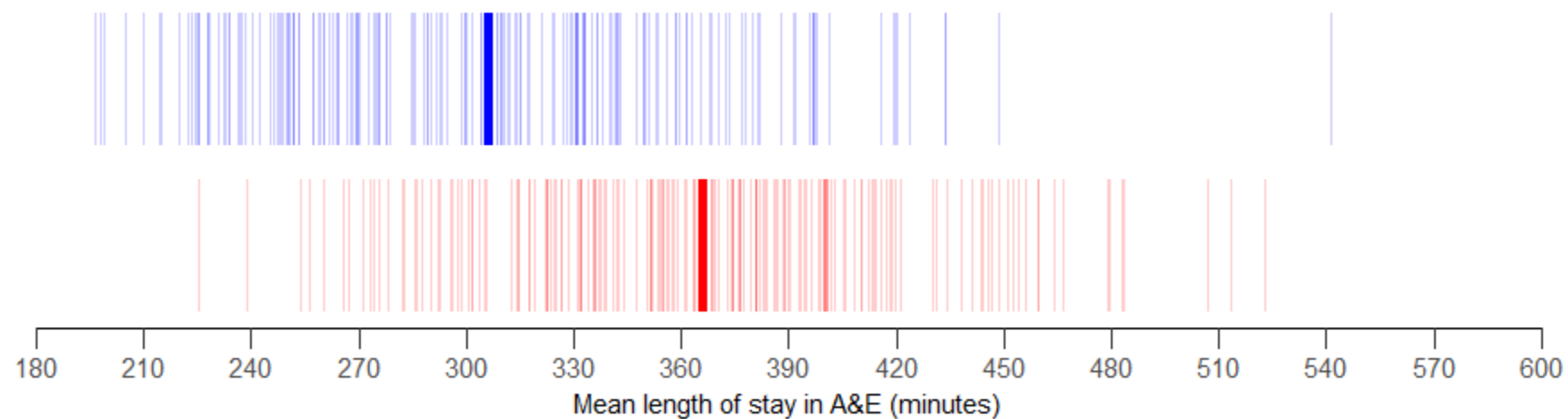
Average length of stay in A&E on each of the 366 days of 2023-24



Source: Patient Management System, Anytown General Hospital

AMU less heavy and AMU more heavy

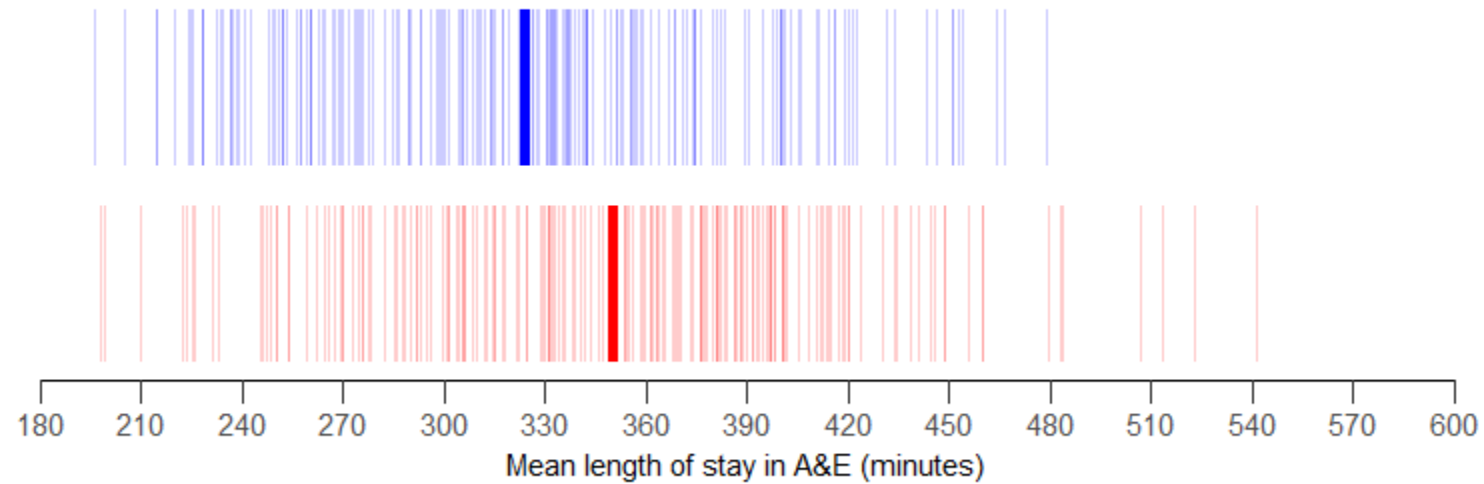
Average length of stay in A&E on each of the 366 days of 2023-24



Source: Patient Management System, Anytown General Hospital

Specialties less full and specialties more full

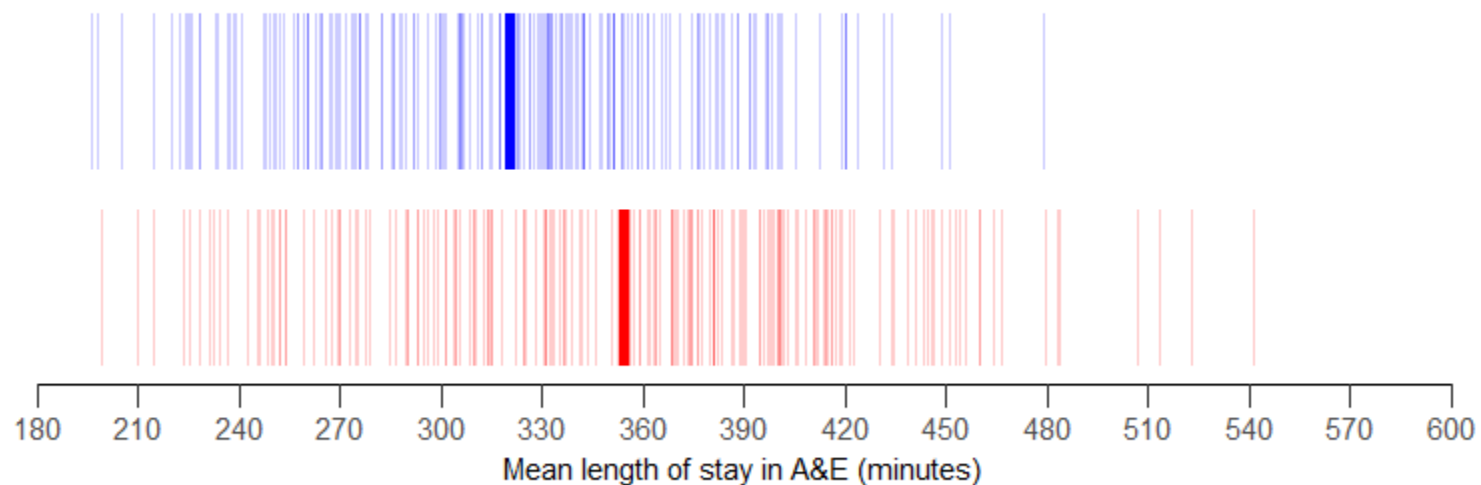
Average length of stay in A&E on each of 366 days: 1 April 2023 to 31 March 2024



Source: Patient Management System, Anytown General Hospital

Specialties lighter and specialties heavier

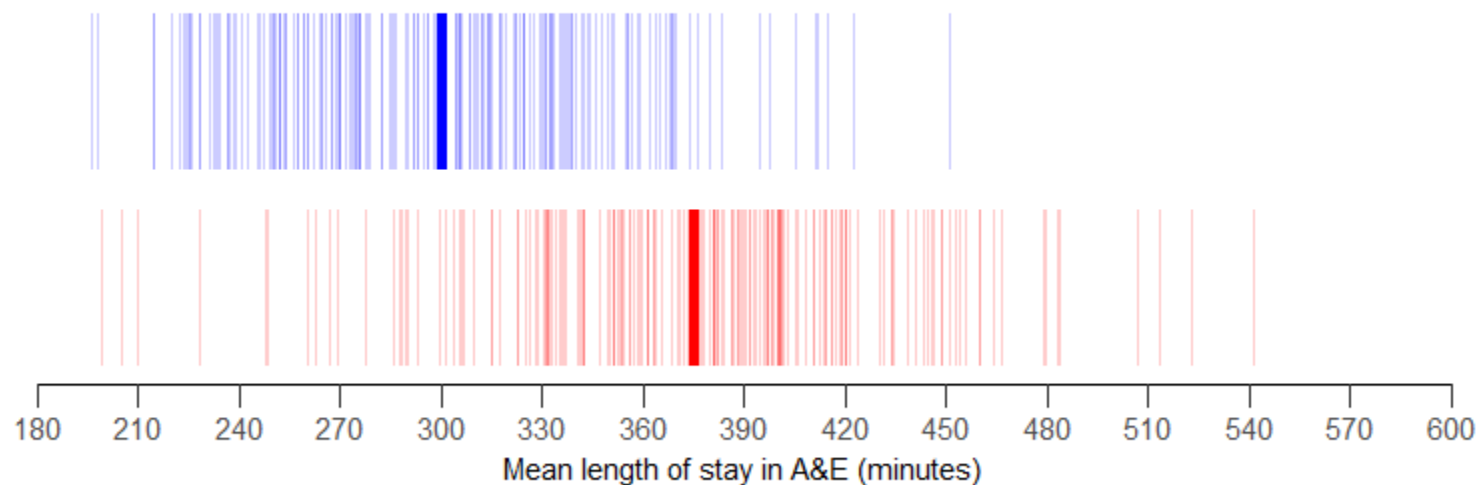
Average length of stay in A&E on each of 366 days: 1 April 2023 to 31 March 2024



Source: Patient Management System, Anytown General Hospital

Specialties future-lighter and specialties future-heavier

Average length of stay in A&E on each of 366 days: 1 April 2023 to 31 March 2024



Source: Patient Management System, Anytown General Hospital

Why heaviness might help

Post-AMU General Medicine			
		What is	What 'ought to be'...
×	How many? (average per day)	6.4 admissions	5.6 admissions
	How long? (average length of stay)	9.4 days	8.8 days
	How full? (average no. of occupied beds)	60.2 occupied beds	49.3 occupied beds

Maybe it could help specialties look at length of stay and occupancy as joined-up metrics...